



SANIDAD

CATÁLOGO GENERAL 2024

**DNK**  
**DYNEKE**



Desde Dyneke trabajamos día a día para lograr la excelencia en nuestro producto final así como en todo el proceso de fabricación.

En este catálogo encontrarás todas las prendas que hemos diseñado con mimo y delicadeza para que en tu negocio vistas con elegancia, glamour y distinción.

**La calidad, la innovación, el trabajo en equipo** y el **diseño** son nuestros valores principales.

Utilizamos materias primas que ofrecen la mayor **calidad** apostando por la **innovación** y el uso de las nuevas tecnologías en todos los sectores de la empresa.

El **trabajo en equipo** es muy importante para llevar a cabo nuestros proyectos de manera coordinada y coherente. Para ello contamos con un equipo de profesionales diverso y exigente dentro de cada ámbito y departamento.

En cuanto al **diseño** de nuestros productos, nos basamos en las últimas tendencias de moda haciendo que nuestros usuarios puedan lucir prendas originales y exclusivas.

¡Descubre nuestra colección de prendas y complementos para vestir a los mejores profesionales!







# SANIDAD



## 8204

Casaca pijama sanitario unisex  
cuello pico. Unisex V-neck scrub tunic.

- 548 Azul porcelana · Porcelain blue
- 843 Rosa nude · Nude pink
- 859 Violeta · Violet
- 884 Agua marina · Sea water
- 891 Azul egeo · Aegean blue
- 886 Ocre · Ocher

70% Pol./Poly. · 30% Algod./Cotton  
132 gr/m<sup>2</sup>

Talla/Size: SP-XG/XS-XXXL



- 846 Azulina · Blue
- 845 Celeste · Light blue
- 847 Verde · Green
- 794 Marino · Navy

67% Pol./Poly. · 33% Algod./Cotton  
160 gr/m<sup>2</sup>

Talla/Size: SP-XG/XS-XXXL



- 700 Blanco · White
- 65% Pol./Poly. · 35% Algod./Cotton  
195 gr/m<sup>2</sup>



Talla/Size: 36-62

Largo/length: 73 cm



8204548



8204886



8204891





8204700



8204859



8204846



8204843



8204884



8204845



8204794



8204847

8008571

8008570



## 8008

Casaca pijama sanitario unisex  
microfibra. Unisex microfiber scrub  
tunic.

- 482 Azul · Blue
- 484 Granate · Garnet
- 489 Verde manzana · Apple green
- 490 Azul denim · Denim blue

Microfibra (100% Pol.)  
150 gr/m<sup>2</sup>



- 568 Malva · Mallow
- 569 Beige · Beige
- 570 Blanco · White
- 571 Negro · Black

Microfibra (100% Pol.)  
150 gr/m<sup>2</sup>



Largo/length: 75 cm  
Talla/Size: SP-XG/XS-XXXL







8008482



8008569



8008568



8008482



8008484



8008489



8008490

8181570

8181571



**8181**

Casaca sanitaria unisex  
microfibra rejilla. Unisex  
microfiber mesh scrub tunic.

570 Blanco · White

571 Negro · Black

Microfibra (100% Pol.)  
150 gr/m<sup>2</sup>



Largo/length: 69 cm

Talla/Size: SP-XG/XS-XXXL









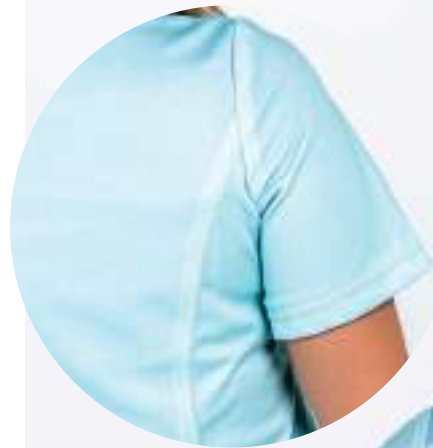
8265570



8265521



8265522



❖ PUNTO PIQUÉ

8265

Casaca mujer m/corta microfibra y punto piqué.  
Women's short-sleeved tunic microfiber and knit.



- 522 Verde · Green
- 521 Rosa · Pink
- 570 Blanco · White

Microfibra (100% Pol.)  
150 gr/m<sup>2</sup>



Largo/length: 70 cm  
Talla/Size: SP-XG/XS-XXXL



Ver pantalones a conjunto en pág. 126.

DNK, PARA TODOS LOS  
NEGOCIOS CON DISTINCIÓN.



8256522



**8256**

Casaca hombre m/corta  
microfibra, cuello pico. Men's  
short-sleeve tunic microfiber,  
V-neck.

**522 Verde** · Green  
Microfibra (100% Pol.)  
150 gr/m<sup>2</sup>



**570 Blanco** · White  
Microfibra (100% Pol.)  
150 gr/m<sup>2</sup>



Largo/length: 76 cm  
Talla/Size: SP-XG/XS-XXXL



8256570

8001900



**8001**

Casaca manga corta hombre  
cuello mao. Mao collar short  
sleeve man tunic.

900 Blanco · White

67% Pol. Poly. · 33% Algod./Cotton  
195 gr/m<sup>2</sup>



Largo/length: 77 cm

Talla/Size: SP-XG/XS-XXXL

8011900



**8011**

Casaca manga corta mujer  
cuello mao. Women's short-  
sleeved tunic with mao collar.

900 Blanco · White

67% Pol. Poly. · 33% Algod./Cotton  
195 gr/m<sup>2</sup>



Largo/length: 70 cm

Talla/Size: SP-XG/XS-XXXL





8028900

**8028**

Casaca sanidad hombre manga corta, con rejilla. Men's short sleeves health tunic, with mesh fabric.

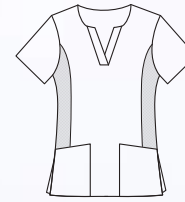
900 Blanco · White

67% Pol. Poly. · 33% Algod./Cotton  
195 gr/m<sup>2</sup>



Largo/length: 75 cm

Talla/Size: SP-XG/XS-XXXL



8029900

**8029**

Casaca sanidad mujer manga corta, con rejilla. Women's short sleeves health tunic, with mesh fabric.

900 Blanco · White

67% Pol. Poly. · 33% Algod./Cotton  
195 gr/m<sup>2</sup>



Largo/length: 66 cm

Talla/Size: SP-XG/XS-XXXL













8188001



8188002



8188003



8188009



8188005



8188006



8188007



8188015



8188008



8188013



8188014



**8188**

Casaca estampada sanitaria unisex microfibra. Printed unisex microfiber scrub tunic.



8188004



8188110



8188112

- 001 Dinos · Dinosaur
- 002 Corazones · Hearts
- 003 Love · Love
- 004 Flores lilas · Purple flowers
- 005 Abstracto · Abstract
- 006 Dentríficos · Toothpastes
- 007 Mandalas · Mandala
- 008 Smile fucsia · Fuchsia smile
- 009 Smile pistacho · Smile pistachio
- 013 Animales azulon · Blue Animals
- 014 Calavera · Skull
- 015 Arco iris · Rainbow
- 110 Burbujas pistacho · Pistachio bubbles
- 112 Tortugas · Turtle

Microfibra (100% Pol.)

150 gr/m<sup>2</sup>



Largo/length: 69 cm

Talla/Size: SP-XG/XS-XXXL





# SANIDAD

## 8201

Pantalón unisex con cinturilla elástica.  
Unisex pants with elastic waistband.

- 548 Azul porcelana · Porcelain blue
- 843 Rosa nude · Nude pink
- 854 Verde · Green
- 859 Violeta · Violet
- 884 Agua marina · Sea water
- 886 Ocre · Ocher
- 892 Morado · Purple
- 891 Azul egeo · Aegean blue

70% Pol./Poly. · 30% Algod./Cotton

132 gr/m<sup>2</sup>

Talla/Size: SP-XG/XS-XXXL



- 824 Beige · Beige

- 844 Gris · Gray

70% Algod./Cotton · 30% Pol./Poly.

135 gr/m<sup>2</sup>

Talla/Size: SP-XG/XS-XXXL



- 846 Azulina · Blue

- 845 Celeste · Light blue

- 794 Marino · Navy

- 847 Verde turquesa · Turquoise green

- 795 Burdeos · Burgundy

67% Pol./Poly. · 33% Algod./Cotton

160 gr/m<sup>2</sup>

Talla/Size: SP-XG/XS-XXXL



- 701 Negro · Black

65% Algod./Cotton · 35% Pol./Poly.

195 gr/m<sup>2</sup>

Talla/Size: SP-XG/XS-XXXL



- 700 Blanco · White

65% Algod./Cotton · 35% Pol./Poly.

195 gr/m<sup>2</sup>

Talla/Size: 36-62



Largo/length: 105 cm



8201886



8201891



8201843



8201548

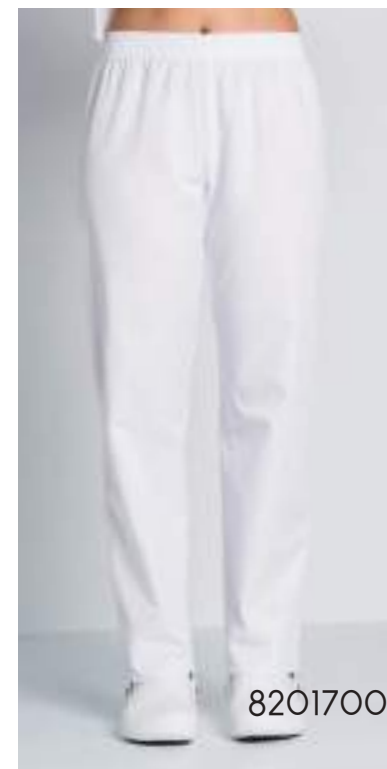


8201884

DNK



8201701



8201700





# SANIDAD

## 9929

Pantalón unisex con cinturilla elástica y bolsillos. Unisex pants with elastic waistband and pockets.

**482** Azul · Blue  
**483** Azul porcelana · Blue porcelain  
**488** Gris perla · Pearl gray  
**490** Azul denim · Denim blue  
**491** Gris medio · Medium gray  
Microfibra (100% Pol.)  
150 gr/m<sup>2</sup>



**569** Beige · Beige  
**570** Blanco · White  
Microfibra (100% Pol.)  
150 gr/m<sup>2</sup>



**576** Gris · Gray  
Microfibra hidrofugada (100% Pol.)  
108 gr/m<sup>2</sup>



**577** Azul marino · Navy blue  
**578** Negro · Black  
Microfibra hidrofugada (100% Pol.)  
86 gr/m<sup>2</sup>



**725** Negro · Black  
100% Pol. · Poly.  
165 gr/m<sup>2</sup>



Talla/Size: SP-XG/XS-XXXL  
Largo/length: 108 cm

**900** Blanco · White  
67% Pol. Poly. · 33% Algod./Cotton  
195 gr/m<sup>2</sup>



Largo/length: 108 cm  
Talla/Size: 36-62



9929490



9929570

9929483



9929491

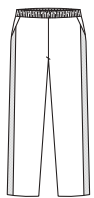








8179570



**8179**

Pantalón microfibra unisex con rejilla lateral. Unisex microfiber pants with side mesh.

570 Blanco · White  
571 Negro · Black

Microfibra (100% Pol.)  
150 gr/m<sup>2</sup>



Largo/length: 105 cm  
Talla/Size: SP-XG/XS-XXXL



8179571



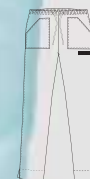
8268521



8268570



8268522



**8268**

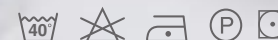
Pantalón unisex cinturilla elástica con cinta. Unisex pants, elastic waistband with ribbon.

570 Blanco · White  
Microfibra (100% Pol.)  
150 gr/m<sup>2</sup>



521 Rosa · Pink  
522 Verde · Green

Microfibra (100% Pol.)  
150 gr/m<sup>2</sup>

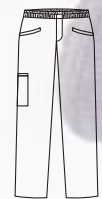


Largo/length: 102 cm  
Talla/Size: SP-XG/XS-XXXL





8220572



**8220**

Pantalón unisex microfibra con textura. Textured microfiber unisex pants.

- 572 Fucsia · Fuchsia
- 573 Pistacho · Pistachio
- 574 Azul · Blue
- 583 Azul marino · Navy blue
- 584 Gris · Gray

Microfibra (100% Pol.)  
150 gr/m<sup>2</sup>



Largo/length: 102 cm  
Talla/Size: SP-XG/XS-XXXL



8220583



8220573



8220574



8220584

8832700



**8832**

Bata manga corta, cuello solapa.  
Short-sleeved short Lab coat, lapel collar.

700 Blanco · White

65% Pol. Poly. · 35% Algod./Cotton  
195 gr/m<sup>2</sup>



Largo/length: 80 cm  
Talla/Size: SP-XG/XS-XXXL



8831700



**8831**

Bata manga larga, cuello solapa.  
Long-sleeved short lab coat, lapel collar.

700 Blanco · White

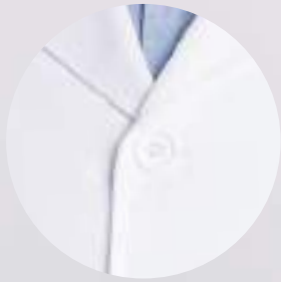
65% Pol. Poly. · 35% Algod./Cotton  
195 gr/m<sup>2</sup>



Largo/length: 80 cm  
Talla/Size: SP-XG/XS-XXXL







8806900



## 8806

Bata larga hombre m/larga, cuello solapa y botones. Men's long-sleeve lab coat, lapel collar and buttons.

900 Blanco · White

67% Pol. Poly. · 33% Algod./Cotton  
195 gr/m<sup>2</sup>



Largo/length: 94 cm  
Talla/Size: 36/62



Batas

8800900



## 8800

Bata larga mujer m/larga, cuello solapa y botones. Women's lab coat l/ sleeves, lapel collar and buttons.

900 Blanco · White

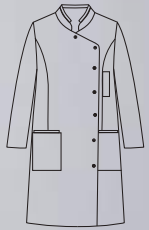
67% Pol. Poly. · 33% Algod./Cotton  
195 gr/m<sup>2</sup>



Largo/length: 95 cm  
Talla/Size: SP-XG/XS-XXXL



8885570



**8885**

Bata laboratorio mujer, m/ larga, cuello mao con vivo.  
Women's lab coat, long sleeves, mao collar with contrast.

570 Blanco · White

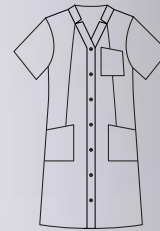
Microfibra (100% Pol.)  
150 gr/m<sup>2</sup>



Largo/length: 90 cm  
Talla/Size: SP-XG/XS-XXXL



8290700

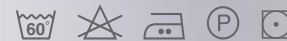


**8290**

Bata larga mujer manga corta, cuello pico. Women's long coat, short sleeves, V-neck.

700 Blanco · White

65% Pol. Poly. · 35% Algod./Cotton  
195 gr/m<sup>2</sup>



Largo/length: 95 cm  
Talla/Size: SP-XG/XS-XXXL



8217700

**8217**

Bata larga mujer manga larga,  
con corchetes. Women's long coat,  
long sleeves with snap fasteners.

700 Blanco · White

65% Pol. Poly. · 35% Algod./Cotton  
195 gr/m<sup>2</sup>

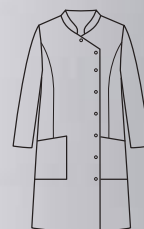


Largo/length: 95 cm

Talla/Size: SP-XG/XS-XXXL



8218700

**8218**

Bata mujer m/larga, cruzada con  
corchetes. Women's coat, long  
sleeves, cross snap fasteners.

700 Blanco · White

65% Pol. Poly. · 35% Algod./Cotton  
195 gr/m<sup>2</sup>



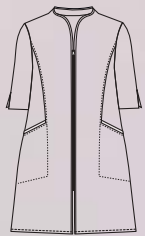
Largo/length: 95 cm

Talla/Size: SP-XG/XS-XXXL





8092700



**8092**

Levita manga 3/4 con vivo raso.  
3/4 sleeve frock coat with satin piping .

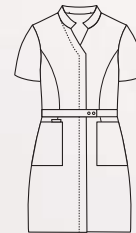
700 Blanco · White  
65% Pol. Poly. · 35% Algod./Cotton  
195 gr/m<sup>2</sup>



Largo/length: 88 cm  
Talla/Size: SP-XG/XS-XXXL



8095700



**8095**

Bata mujer m/corta corchetes  
ocultos en tapeta. Women's long  
coat s/sleeves with concealed snaps  
on the placket.

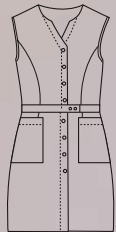
700 Blanco · White  
65% Pol. Poly. · 35% Algod./Cotton  
195 gr/m<sup>2</sup>



Largo/length: 90 cm  
Talla/Size: SP-XG/XS-XXXL



8093700

**8093**

Bata larga mujer sin mangas,  
con corchetes. Women's long coat,  
sleeveless, with snap fasteners.

700 Blanco · White

65% Pol. Poly. · 35% Algod./Cotton  
195 gr/m<sup>2</sup>



Largo/length: 90 cm  
Talla/Size: SP-XG/XS-XXXL



**DÍSTINGUETE DE TU COMPETENCIA  
CON ESTILO Y ELEGANCIA.**

8681700

**8681**

Bata larga mujer manga 3/4,  
vivo satén. Women's long coat, 3/4  
sleeves, satin piping.

700 Blanco · White

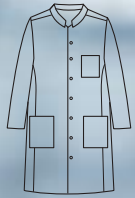
65% Pol. Poly. · 35% Algod./Cotton  
195 gr/m<sup>2</sup>



Largo/length: 95 cm  
Talla/Size: SP-XG/XS-XXXL



8813570

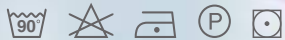


**8813**

Bata laboratorio hombre m/larga, cuello mao. Men's lab coat, long sleeves, mandarin collar.

570 Blanco · White

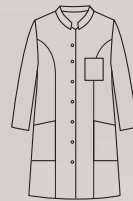
Microfibra (100% Pol.)  
150 gr/m<sup>2</sup>



Largo/length: 100 cm  
Talla/Size: SP-XG/XS-XXXL



8816570



**8816**

Bata laboratorio mujer m/larga, cuello mao. Women's lab coat, long sleeves, mandarin collar.

570 Blanco · White

Microfibra (100% Pol.)  
150 gr/m<sup>2</sup>



Largo/length: 96 cm  
Talla/Size: SP-XG/XS-XXXL





8898570



8897570

**8897**

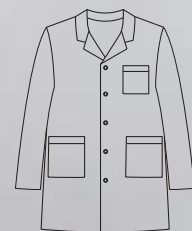
Bata mujer m/ larga, cuello solapa y corchetes. Women's lab coat, l/sleeves, lapel collar and snaps.

570 Blanco · White

Microfibra (100% Pol.)  
150 gr/m<sup>2</sup>



Largo/length: 96 cm  
Talla/Size: SP-XG/XS-XXXL

**8898**

Bata hombre m/ larga, cuello solapa y corchetes. Men's lab coat, l/ sleeves, lapel collar and snaps.

570 Blanco · White

Microfibra (100% Pol.)  
150 gr/m<sup>2</sup>



Largo/length: 96 cm  
Talla/Size: SP-XG/XS-XXXL





8163570

 **MICROFIBRA**



**8163**

Chaqueta de mujer,  
manga larga, cuello mao y  
cremallera. Women's jacket,  
long sleeves, mandarin collar  
and zipper.

570 Blanco · White

Microfibra (100% Pol.)  
150 gr/m<sup>2</sup>



Largo/length: 72 cm  
Talla/Size: SP-XG/XS-XXXL



8825570



**8825**

Chaqueta de mujer,  
manga corta, cuello mao y  
cremallera. Women's jacket,  
short sleeves, mandarin collar  
and zipper.

570 Blanco · White

Microfibra (100% Pol.)  
150 gr/m<sup>2</sup>



Largo/length: 72 cm  
Talla/Size: SP-XG/XS-XXXL





8291570



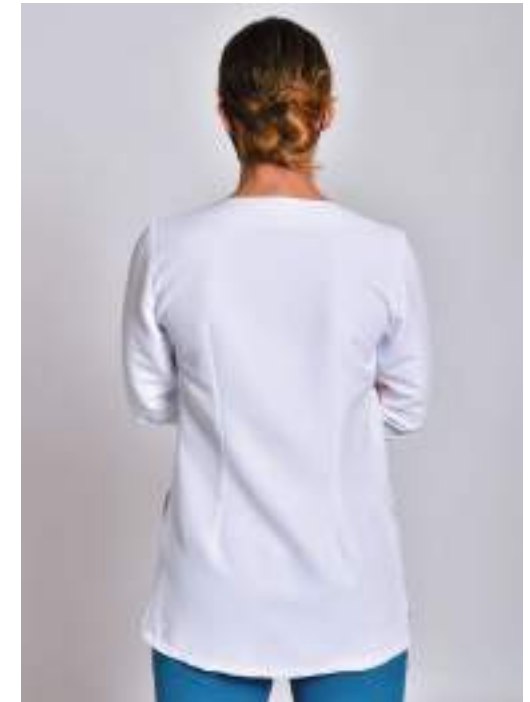
8291

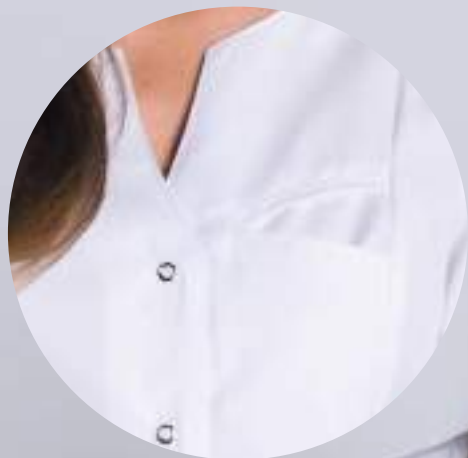
Chaqueta de mujer, manga larga, con cremallera, Women's jacket, long sleeves and zipper.

570 Blanco · White  
Microfibra (100% Pol.)  
150 gr/m<sup>2</sup>



Largo/length: 72 cm  
Talla/Size: SP-XG/XS-XXXL





8151700



**8151**

Chaqueta mujer, manga corta, bolsillos ocultos y corchetes.  
Women's jacket, short sleeves, hidden pockets and snaps.

700 Blanco · White

65% Pol. Poly. · 35% Algod./Cotton  
195 gr/m<sup>2</sup>



Largo/length: 70 cm  
Talla/Size: SP-XG/XS-XXXL



8152700



**8152**

Chaqueta mujer, manga larga, bolsillos ocultos y corchetes.  
Women's jacket, long sleeves, hidden pockets and snaps.

700 Blanco · White

65% Pol. Poly. · 35% Algod./Cotton  
195 gr/m<sup>2</sup>



Largo/length: 68 cm  
Talla/Size: SP-XG/XS-XXXL



8251700



8251

Bata manga corta, corchetes ocultos en tapeta. Short-sleeve short lab coat, hidden snaps fasteners.

700 Blanco · White

65% Pol. Poly. · 35% Algod./Cotton  
195 gr/m<sup>2</sup>



Largo/length: 80 cm  
Talla/Size: SP-XG/XS-XXXL



8252700



8252

Bata manga larga, corchetes ocultos en tapeta. Long-sleeve short lab coat, hidden snaps fasteners.

700 Blanco · White

65% Pol. Poly. · 35% Algod./Cotton  
195 gr/m<sup>2</sup>



Largo/length: 80 cm  
Talla/Size: SP-XG/XS-XXXL







8815570

 MICROFIBRA

8826570



**8815**

Chaqueta hombre m/corta con corchetes ocultos.

Men's short sleeves jacket with concealed snaps fasteners.

570 Blanco · White

Microfibra (100% Pol.)  
150 gr/m<sup>2</sup>



Largo/length: 76 cm

Talla/Size: SP-XG/XS-XXXL



**8826**

Chaqueta mujer m/corta con corchetes ocultos.

Women's short sleeves jacket, with concealed snap fasteners.

570 Blanco · White

Microfibra (100% Pol.)  
150 gr/m<sup>2</sup>



Largo/length: 70 cm

Talla/Size: SP-XG/XS-XXXL



8213570




## 8205

Chaqueta mujer m/larga con corchetes ocultos. Women's long sleeves jacket with concealed snaps fasteners.

570 Blanco · White

Microfibra (100% Pol.)  
150 gr/m<sup>2</sup>



Largo/length: 70 cm  
Talla/Size: SP-XG/XS-XXXL



## 8213

Chaqueta hombre m/larga con corchetes ocultos. Men's long sleeves jacket with concealed snaps fasteners.

570 Blanco · White

Microfibra (100% Pol.)  
150 gr/m<sup>2</sup>



Largo/length: 76 cm  
Talla/Size: SP-XG/XS-XXXL



8205570



8515700



✓ SARGA



**8515**

Chaqueta hombre m/corta, corchetes ocultos en tapeta. Men's s/ sleeves jacket, hidden snap fasteners.

700 Blanco · White

65% Pol. Poly. · 35% Algod./Cotton  
195 gr/m<sup>2</sup>



Largo/length: 76 cm

Talla/Size: SP-XG/XS-XXXL



8517700



**8517**

Chaqueta mujer m/corta, corchetes ocultos en tapeta. Women's s/ sleeves jacket, hidden snap fasteners.

700 Blanco · White

65% Pol. Poly. · 35% Algod./Cotton  
195 gr/m<sup>2</sup>



Largo/length: 70 cm

Talla/Size: SP-XG/XS-XXXL



8514700



**8514**

Chaqueta hombre m/larga, corchetes ocultos en tapeta.

Men's long sleeves jacket, hidden snap fasteners.

700 Blanco · White

65% Pol. Poly. · 35% Algod./Cotton  
195 gr/m<sup>2</sup>



Largo/length: 76 cm

Talla/Size: SP-XG/XS-XXXL



8516700



**8516**

Chaqueta mujer m/larga, corchetes ocultos en tapeta. Women's long sleeves jacket, hidden snap fasteners.

700 Blanco · White

65% Pol. Poly. · 35% Algod./Cotton  
195 gr/m<sup>2</sup>



Largo/length: 70 cm

Talla/Size: SP-XG/XS-XXXL



8515700

✓ SARGA



8295570  
8295900

8207570  
8207900



 MICROFIBRA  
 SARGA



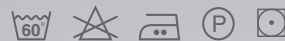
**8295**

Chaqueta de mujer m/corta, cuello mao y botones. Women's jacket, short sleeves, mao collar and buttons.

**570** Blanco · White  
Microfibra (100% Pol.)  
150 gr/m<sup>2</sup>



**900** Blanco · White  
67% Pol. Poly. · 33% Algod./Cotton  
195 gr/m<sup>2</sup>



Largo/length: 70 cm  
Talla/Size: SP-XG/XS-XXXL



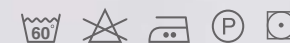
**8207**

Chaqueta hombre m/corta, cuello mao y botones. Men's jacket, short sleeves, mao collar and buttons.

**570** Blanco · White  
Microfibra (100% Pol.)  
150 gr/m<sup>2</sup>



**900** Blanco · White  
67% Pol. Poly. · 33% Algod./Cotton  
195 gr/m<sup>2</sup>



Largo/length: 76 cm  
Talla/Size: SP-XG/XS-XXXL





**8296**

Chaqueta mujer m/larga,  
cuello mao y botones. Women's  
long sleeves jacket, mao collar  
and buttons.



8208570  
8208900

8296570  
8296900

**570** Blanco · White  
Microfibra (100% Pol.)  
150 gr/m<sup>2</sup>



**900** Blanco · White  
67% Pol. Poly. · 33% Algod./  
Cotton  
195 gr/m<sup>2</sup>



Largo/length: 70 cm  
Talla/Size: SP-XG/XS-XXXL

**8208**

Chaqueta hombre m/larga,  
cuello mao y botones. Men's  
long sleeves jacket, mao  
collar and buttons.



**570** Blanco · White  
Microfibra (100% Pol.)  
150 gr/m<sup>2</sup>



**900** Blanco · White  
67% Pol. Poly. ·  
33% Algod./Cotton  
195 gr/m<sup>2</sup>



Largo/length: 76 cm  
Talla/Size: SP-XG/XS-XXXL

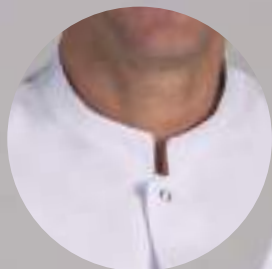


 **MICROFIBRA**  
 **SARGA**

# SANIDAD

8253570  
8253900

 MICROFIBRA  
 SARGA



## 8253

Chaqueta unisex manga corta con corchetes. Unisex's short sleeves jacket with snaps fasteners.

570 Blanco · White  
Microfibra (100% Pol.)  
150 gr/m<sup>2</sup>



900 Blanco · White  
67% Pol. Poly. · 33% Algod./Cotton  
195 gr/m<sup>2</sup>



Largo/length: 73 cm  
Talla/Size: SP-XG/XS-XXXL



8254570  
8254900



## 8254

Chaqueta unisex manga larga con corchetes. Unisex's long sleeves jacket with snaps fasteners.

570 Blanco · White  
Microfibra (100% Pol.)  
150 gr/m<sup>2</sup>



900 Blanco · White  
67% Pol. Poly. · 33% Algod./Cotton  
195 gr/m<sup>2</sup>



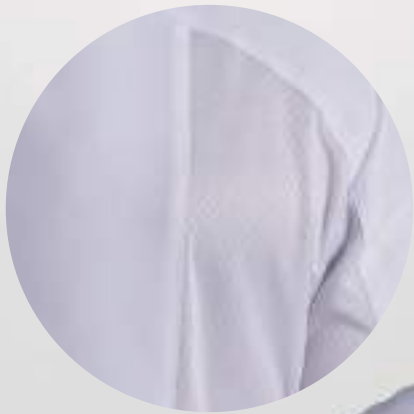
Largo/length: 73 cm  
Talla/Size: SP-XG/XS-XXXL



**DNK**



8175570

**8175**

Chaqueta cbro. manga larga,  
con rejilla en costadillos. Men's  
long sleeves jacket, mesh on the sides.

570 Blanco · White

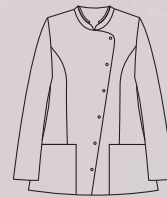
Microfibra (100% Pol.)  
150 gr/m<sup>2</sup>



Largo/length: 77 cm  
Talla/Size: SP-XG/XS-XXXL



8176570

**8176**

Chaqueta mujer m/larga, con rejilla  
en costadillos. Women's long sleeves  
jacket, mesh on the sides.

570 Blanco · White

Microfibra (100% Pol.)  
150 gr/m<sup>2</sup>



Largo/length: 68 cm  
Talla/Size: SP-XG/XS-XXXL





8190570



**8190**

Chaqueta m/larga mujer,  
corchetes ocultos en doble tapeta.  
Women's l/sleeves jacket with concealed  
double-placket snaps.

**570** Blanco · White

Microfibra (100% Pol.)  
150 gr/m<sup>2</sup>



Largo/length: 74 cm  
Talla/Size: SP-XG/XS-XXXL



8191570



**8191**

Chaqueta hombre m/larga,  
corchetes ocultos en doble tapeta.  
Men's l/sleeves jacket with concealed  
double-placket snaps.

**570** Blanco · White

Microfibra (100% Pol.)  
150 gr/m<sup>2</sup>



Largo/length: 75 cm  
Talla/Size: SP-XG/XS-XXXL



8212570

8206570



**8212**

Chaqueta hombre m/corta, corchetes ocultos en doble tapeta. Men's s/sleeves jacket with concealed double-placket snaps.

570 Blanco · White

Microfibra (100% Pol.)  
150 gr/m<sup>2</sup>



Largo/length: 75 cm  
Talla/Size: SP-XG/XS-XXXL



**8206**

Chaqueta m/corta mujer, corchetes ocultos en doble tapeta. Women's s/sleeves jacket with concealed double-placket snaps.

570 Blanco · White

Microfibra (100% Pol.)  
150 gr/m<sup>2</sup>



Largo/length: 74 cm  
Talla/Size: SP-XG/XS-XXXL



8828570

8819570

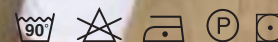


**8828**

Chaqueta mujer cremallera. Women's jacket with zipper.

570 Blanco · White

Microfibra (100% Pol.)  
150 gr/m<sup>2</sup>



Largo/length: 71 cm  
Talla/Size: SP-XG/XS-XXXL

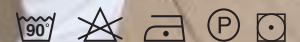


**8819**

Chaqueta hombre cremallera. Men's jacket with zipper.

570 Blanco · White

Microfibra (100% Pol.)  
150 gr/m<sup>2</sup>



Largo/length: 75 cm  
Talla/Size: SP-XG/XS-XXXL



8827570



**8827**

Chaqueta mujer m/larga, corchetes ocultos en tapeta. Women's long sleeves jacket, concealed snaps on the placket.

570 Blanco · White  
Microfibra (100% Pol.)  
150 gr/m<sup>2</sup>



Largo/length: 71 cm  
Talla/Size: SP-XG/XS-XXXL



8883570



**8883**

Chaqueta hombre m/larga, vivos y linea de corchetes ocultos. Men's l/sleeves jacket, contrast and line of snaps.

570 Blanco · White  
Microfibra (100% Pol.)  
150 gr/m<sup>2</sup>



Largo/length: 75 cm  
Talla/Size: SP-XG/XS-XXXL





8804490

8808490



8804

Chaqueta bicolor mujer m/corta.  
Two-tone women's jacket, short sleeves.

- 487 Lila · Purple
- 489 Verde · Apple green
- 490 Azul denim · Denim Blue

Microfibra (100% Pol.)  
150 gr/m<sup>2</sup>



Largo/length: 70 cm  
Talla/Size: SP-XG/XS-XXXL

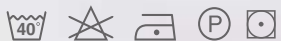


8808

Chaqueta hombre m/corta  
contraste en bolsillo. Men's short sleeves jacket, contrast in one pocket.

- 489 Verde manzana · Apple green
- 490 Azul denim · Denim Blue

Microfibra (100% Pol.)  
150 gr/m<sup>2</sup>



Largo/length: 77 cm  
Talla/Size: SP-XG/XS-XXXL



8804487



8804489



8808489

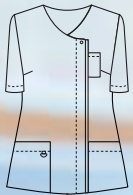




8821583

8822583

**DNK, MODA Y DISEÑO  
EN EL MUNDO LABORAL.**



**8821**

Chaqueta m/corta mujer, corchetes ocultos en tapeta. Women's s/sleeves jacket, hidden snap fasteners.

**491** Gris medio · Medium gray  
Microfibra (100% Pol.)  
150 gr/m<sup>2</sup>



**570** Blanco · White  
**583** Azul marino · Navy blue  
Microfibra (100% Pol.)  
150 gr/m<sup>2</sup>



Largo/length: 71 cm  
Talla/Size: SP-XG/XS-XXXL



**8822**

Chaqueta m/corta hombre, corchetes ocultos en tapeta. Men's s/sleeves jacket, hidden snaps fasteners.

**491** Gris medio · Medium gray  
Microfibra (100% Pol.)  
150 gr/m<sup>2</sup>



**570** Blanco · White  
**583** Azul marino · Navy blue  
Microfibra (100% Pol.)  
150 gr/m<sup>2</sup>



Largo/length: 77 cm  
Talla/Size: SP-XG/XS-XXXL









8803570



8803491



8803583

**8803**

Chaqueta m/larga mujer, corchetes ocultos en tapeta. Women's l/sleeves jacket, hidden snap fasteners.

**491** Gris medio · Medium gray  
Microfibra (100% Pol.)  
150 gr/m<sup>2</sup>



**570** Blanco · White

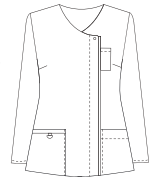
**583** Azul marino · Navy blue

Microfibra (100% Pol.)  
150 gr/m<sup>2</sup>



Largo/length: 71 cm

Talla/Size: SP-XG/XS-XXXL



8802570



8802491



8802583

**8802**

Chaqueta m/larga hombre, corchetes ocultos en tapeta. Men's l/sleeves jacket, hidden snaps fasteners.

**491** Gris medio · Medium gray  
Microfibra (100% Pol.)  
150 gr/m<sup>2</sup>



**570** Blanco · White

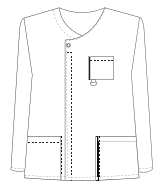
**583** Azul marino · Navy blue

Microfibra (100% Pol.)  
150 gr/m<sup>2</sup>



Largo/length: 71 cm

Talla/Size: SP-XG/XS-XXXL



8209583

8210583



8209

Chaqueta mujer m/corta, cremallera malla invertida. Women's s/sleeves, reverse mesh zipper.

481 Rosa · Pink  
483 Azul porcelana · Porcelain blue  
Microfibra (100% Pol.)  
150 gr/m<sup>2</sup>



570 Blanco · White  
572 Fucsia · Fuchsia  
573 Pistacho · Pistachio  
583 Azul marino · Navy blue

Microfibra (100% Pol.)  
150 gr/m<sup>2</sup>



Largo/length: 68 cm  
Talla/Size: SP-XG/XS-XXXL



8210

Chaqueta hombre m/corta, cuello pico y cremallera. Men's s/sleeves jacket, V-neck and zipper.

570 Blanco · White  
573 Pistacho · Pistachio  
583 Azul marino · Navy blue

Microfibra (100% Pol.)  
150 gr/m<sup>2</sup>



Largo/length: 75 cm  
Talla/Size: SP-XG/XS-XXXL



8209570



8210570





8209572



8209573



8210573



8209483



8209481

8010570

8010573

8010583



**8010**

Chaqueta hombre m/larga, cuello pico y cremallera. Men's jacket, long sleeves, V-neck and zipper.

- 570 Blanco · White
- 573 Pistacho · Pistachio
- 583 Azul marino · Navy blue

Microfibra (100% Pol.)  
150 gr/m<sup>2</sup>



Largo/length: 75 cm  
Talla/Size: SP-XG/XS-XXXL



8009570



8009572



8009573



**8009**

Chaqueta mujer m/larga, cremallera malla invertida. Women's l/sleeves, reverse mesh zipper.

- 570 Blanco · White
- 572 Fucsia · Fuchsia
- 573 Pistacho · Pistachio
- 583 Azul marino · Navy blue

Microfibra (100% Pol.)  
150 gr/m<sup>2</sup>



Largo/length: 68 cm  
Talla/Size: SP-XG/XS-XXXL



8009583

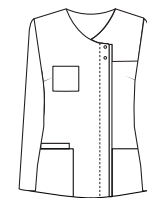




8817573



8818576



**8817**

Chaqueta mujer m/larga, corchetes ocultos en tapeta. Women's l/sleeves, concealed snaps on the placket.

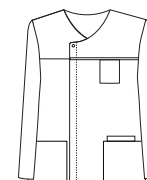
570 Blanco · White  
573 Pistacho · Pistachio



483 Azul porcelana · Porcelain blue  
Microfibra (100% Pol.)  
150 gr/m<sup>2</sup>



Largo/length: 69 cm  
Talla/Size: SP-XG/XS-XXXL



**8818**

Chaqueta m/larga cbro., corchetes ocultos en tapeta. Men's l/sleeves jacket, concealed snaps on the placket.

570 Blanco · White  
Microfibra (100% Pol.)  
150 gr/m<sup>2</sup>



576 Gris · Gray  
577 Azul marino · Navy blue  
Microfibra (100% Pol.)  
150 gr/m<sup>2</sup>



Largo/length: 76 cm  
Talla/Size: SP-XG/XS-XXXL





8187482

8186482



8187

Chaqueta cbro.asimétrica, m/corta y corchetes ocultos en tapeta. Men's asymmetric jacket, s/ sleeves and concealed snaps on the placket.

- 482 Azul · Blue
- 483 Azul porcelana · Porcelain blue

Microfibra (100% Pol.)  
150 gr/m<sup>2</sup>



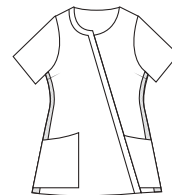
Largo/length: 75 cm  
Talla/Size: SP-XG/XS-XXXL



8186481



Pantalón a tono bajo pedido.  
Matching trousers on request.



8186

Chaqueta asimétrica mujer, m/corta y corchetes ocultos en tapeta. Women's asymmetric jacket, s/ sleeves and concealed snaps on the placket.

- 481 Rosa · Pink
- 482 Azul · Blue
- 483 Azul porcelana · Porcelain blue

Microfibra (100% Pol.)  
150 gr/m<sup>2</sup>



Largo/length: 69 cm  
Talla/Size: SP-XG/XS-XXXL

8187483



8186483

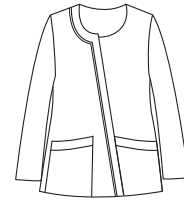




8052488



8177488

**8177**

Chaqueta asimétrica mujer, m/larga y corchetes ocultos en tapeta. Women's asymmetric jacket. l/sleeves and concealed snaps on the placket.

482 Azul · Blue

488 Gris perla · Pearl gray

Microfibra (100% Pol.)

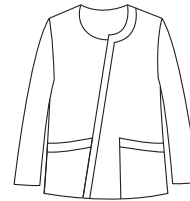
150 gr/m<sup>2</sup>

Largo/length: 67 cm

Talla/Size: SP-XG/XS-XXXL



8177482

**8052**

Chaqueta cbro. asimétrica, m/larga y corchetes ocultos en tapeta. Men's asymmetric jacket. l/sleeves and concealed snaps on the placket.

482 Azul · Blue

488 Gris perla · Pearl gray

Microfibra (100% Pol.)

150 gr/m<sup>2</sup>

Largo/length: 72 cm

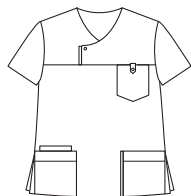
Talla/Size: SP-XG/XS-XXXL



8052482



8022584



8022

Casaca cbro. manga corta, cuello con abertura de corchete. Men's s/sleeves tunic, collar with hook-and-eye opening.

- 569 Beige · Beige
- 570 Blanco · White
- 571 Negro · Black
- 574 Azul · Blue
- 584 Gris · Gray

Microfibra (100% Pol.)  
150 gr/m<sup>2</sup>



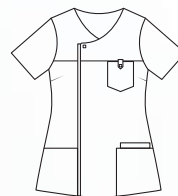
576 Gris · Gray  
Microfibra hidrofugada  
(100% Pol.)  
108 gr/m<sup>2</sup>



Largo/length: 73 cm  
Talla/Size: SP-XG/XS-XXXL



8023572



8023

Casaca mujer manga corta, cuello con abertura de corchete. Women's s/sleeves tunic, collar with hook-and-eye opening.

- 569 Beige · Beige
- 570 Blanco · White
- 571 Negro · Black
- 572 Fucsia · Fucshia
- 574 Azul · Blue

Microfibra (100% Pol.)  
150 gr/m<sup>2</sup>



576 Gris · Gray  
Microfibra hidrofugada  
(100% Pol.)  
108 gr/m<sup>2</sup>



Largo/length: 70 cm  
Talla/Size: SP-XG/XS-XXXL



8023569



8022569







8293873



**8293**

Chaqueta mujer m/corta,  
cremallera malla invertida.  
Women's short sleeves jacket,  
reverse mesh zipper.

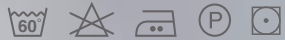
700 Blanco · White

794 Azul · Blue

859 Violeta · Violet

873 Verde · Green

65% Pol. Poly. · 35% Algod./Cotton  
195 gr/m<sup>2</sup>

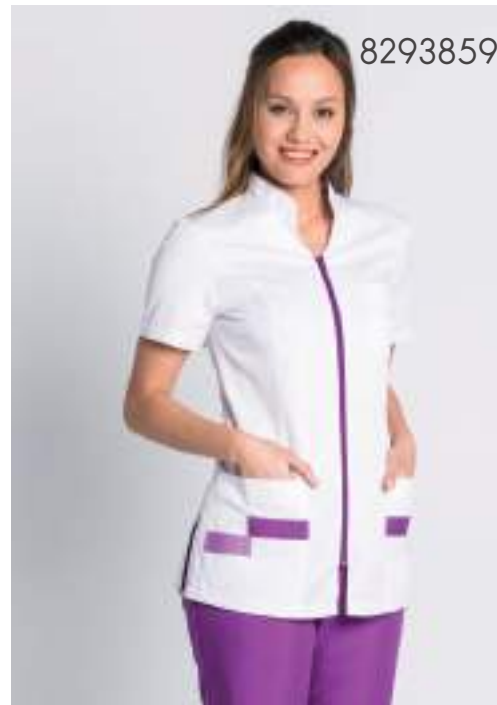


Largo/length: 70 cm

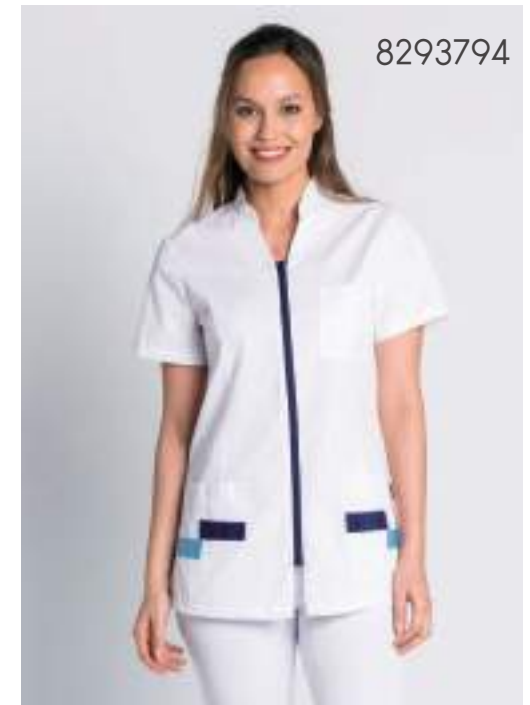
Talla/Size: SP-XG/XS-XXXL



8293859



8293794



8293700





8262700



8262859



8262794

8293794



8262873



## 8262

Chaqueta hombre m/corta, cremallera malla invertida.  
Men's short sleeves jacket, reverse mesh zipper.

- 700 Blanco · White
  - 794 Azul · Blue
  - 859 Violeta · Violet
  - 873 Verde · Green
- 65% Pol. Poly. · 35% Algod./Cotton  
195 gr/m<sup>2</sup>



Largo/length: 76 cm  
Talla/Size: SP-XG/XS-XXXL



8294794



**8294**

Chaqueta mujer m/larga,  
cremallera malla invertida.  
Women's long sleeves jacket,  
reverse mesh zipper.

700 Blanco · White

794 Azul · Blue

859 Violeta · Violet

873 Verde · Green

65% Pol. Poly. · 35% Algod./Cotton  
195 gr/m<sup>2</sup>



Largo/length: 73 cm

Talla/Size: SP-XG/XS-XXXL



8294859



8294873



8294700





8073873



8294873

8073859



8073700



## 8073

Chaqueta hombre m/larga,  
cremallera malla invertida.  
Men's long sleeves jacket,  
reverse mesh zipper.



700 Blanco · White

794 Azul · Blue

859 Violeta · Violet

873 Verde · Green

65% Pol. Poly. · 35% Algod./Cotton

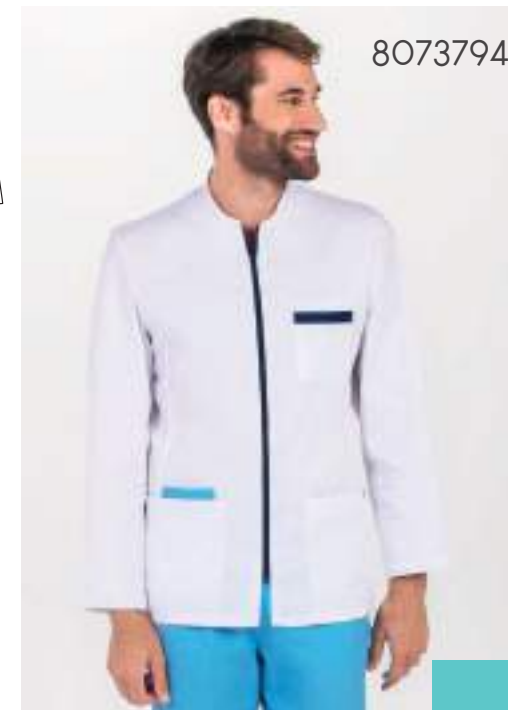
195 gr/m<sup>2</sup>

Largo/length: 76 cm

Talla/Size: SP-XG/XS-XXXL



8073794



8289846



**8289**

Chaqueta mujer manga corta, con doble vivo contraste. Women's jacket, short sleeves, with double contrast.

- 700 Blanco · White
- 701 Negro · Black
- 846 Azulina · Blue
- 854 Verde · Green
- 892 Vino · Red wine

65% Pol. Poly. · 35% Algod./Cotton  
195 gr/m<sup>2</sup>



Largo/length: 70 cm  
Talla/Size: SP-XG/XS-XXXL



8289701



8289892



8289854



DNK, UNA NUEVA FORMA  
DE TRABAJAR CON  
ESTILO Y COMODIDAD.





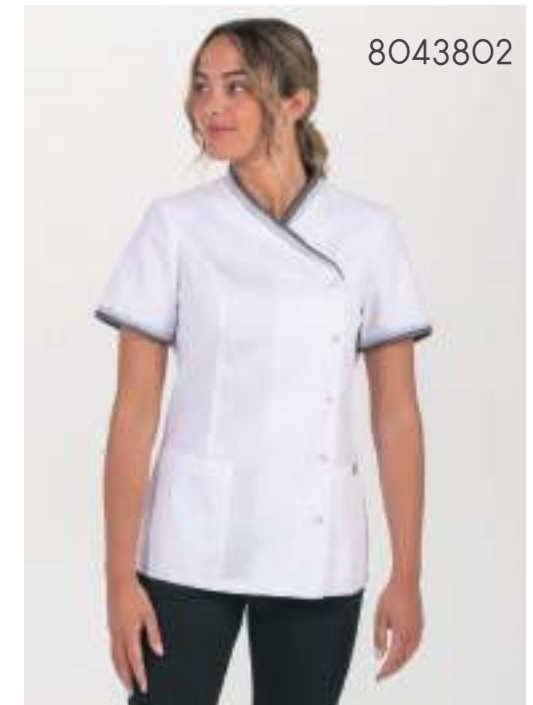
8072887



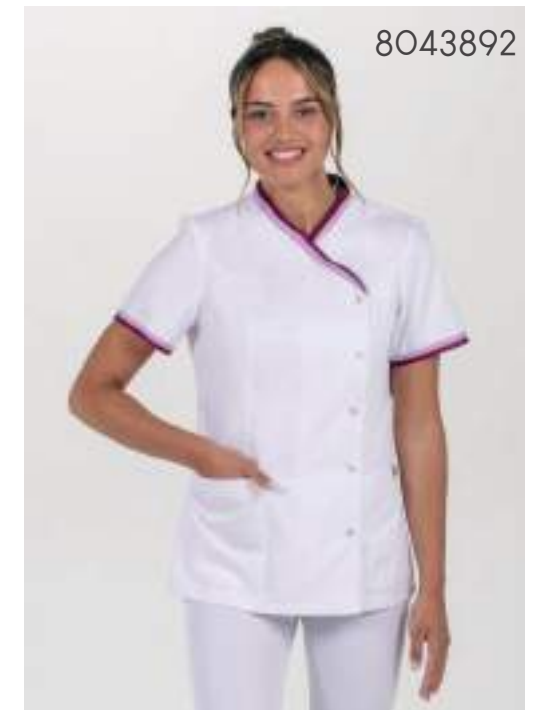
8043887



8043700



8043802



8043892



8072700



8072887



8072491



8072892

**8043**

Chaqueta cruzada de mujer m/corta, con vivos. Women's crossed jacket. s/sleeves, with contrasting.



- 700 Blanco · White
- 887 Verde · Green
- 892 Lila · Purple
- 802 Gris · Grey

65% Pol. Poly. · 35% Algod./Cotton  
195 gr/m<sup>2</sup>

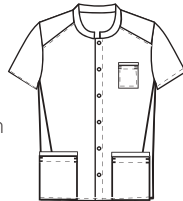


Largo/length: 73 cm  
Talla/Size: SP-XG/XS-XXXL



**8072**

Chaqueta cbro. contraste manga corta. Men's jacket with contrasting, short sleeves.



- 700 Blanco · White
- 887 Verde · Green
- 892 Lila · Purple
- 491 Gris · Grey

65% Pol. Poly. · 35% Algod./Cotton  
195 gr/m<sup>2</sup>



Largo/length: 77 cm  
Talla/Size: SP-XG/XS-XXXL





8820700



• MICROGRANITO

8820884

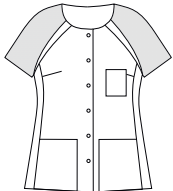


8820859



8820

Chaqueta mujer manga raglan corta, con rejilla. Women's jacket, raglan short sleeves, with mesh.



700 Blanco · White

859 Violeta · Violet

884 Agua marina · Sea water  
65% Pol. Poly. · 35% Algod./Cotton  
195 gr/m<sup>2</sup>

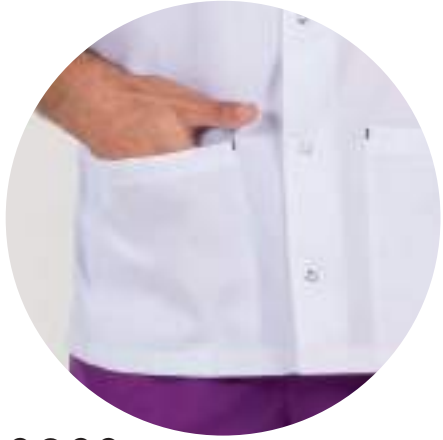


Largo/length: 63 cm

Talla/Size: SP-XG/XS-XXXL







8088700



8088859



8088884

## 8088

Chaqueta hombre manga  
ranglan corta, con rejilla. Men's  
jacket, raglan short sleeves, with  
mesh.



700 Blanco · White

859 Violeta · Violet

884 Agua marina · Sea water  
65% Pol. Poly. · 35% Algod./Cotton  
195 gr/m<sup>2</sup>



Largo/length: 75 cm

Talla/Size: SP-XG/XS-XXXL



8264854

8824854



**8264**

Chaqueta mujer, m/larga cuello barco. Women's jacket, long sleeves, boat neck.

- 854 Verde · Green
- 859 Violeta · Violet
- 875 Azul · Blue

65% Pol. Poly. · 35% Algod./Cotton  
195 gr/m<sup>2</sup>



Largo/length: 68 cm  
Talla/Size: SP-XG/XS-XXXL



**8824**

Chaqueta hombre, m/larga, con contrastes. Men's jacket, long sleeves with contrast.

- 854 Verde · Green
- 859 Violeta · Violet
- 875 Azul · Blue

65% Pol. Poly. · 35% Algod./Cotton  
132 gr/m<sup>2</sup>



Largo/length: 80 cm  
Talla/Size: SP-XG/XS-XXXL







8200898



**8200**

Bata paciente con cintas traseras.  
Patient coat with back straps.

**898** Blanco · White

75% Pol. Poly. · 25% Algod./Cotton  
132 gr/m<sup>2</sup>



Largo/length: 111 cm  
Talla/Size: Única · Unic



8241700

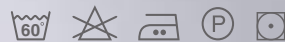


**8241**

Bata embarazada.  
Pregnant coat.

**700** Blanco · White

65% Pol. Poly. · 35% Algod./Cotton  
195 gr/m<sup>2</sup>

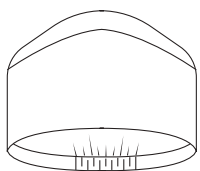


Largo/length: 82 cm  
Talla/Size: Única · Unic









## 8409

Gorro sanitario microfibra estampado.  
Printed microfiber sanitary cap.

- 001 Dinos · Dinosaur
- 002 Corazones · Hearts
- 003 Love · Love
- 004 Flores lilas · Purple flowers
- 005 Abstracto · Abstract
- 006 Dentríficos · Toothpastes
- 007 Mandalas · Mandala
- 011 Animales petróleo · Petroleum animals
- 013 Animales azulón · Blue Animals
- 014 Calavera · Skull
- 015 Arco iris · Rainbow
- 110 Burbujas pistacho · Pistachio bubbles
- 112 Tortugas · Turtle

Microfibra (100% Pol.)  
150 gr/m<sup>2</sup>



Talla/Size: única/unic



8409001



8409002



8409003



8409004



8409005



8409006







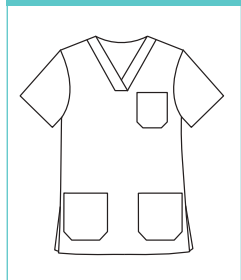




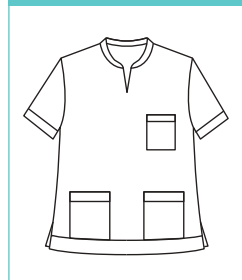




8204 pág. 108



8008 pág. 110



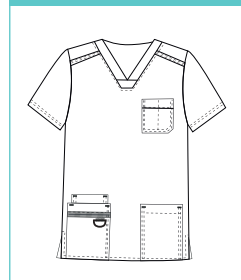
8181 pág. 112



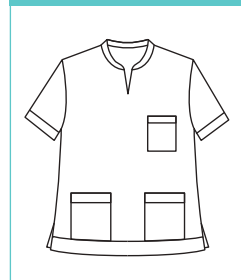
8265 pág. 114



8256 pág. 115



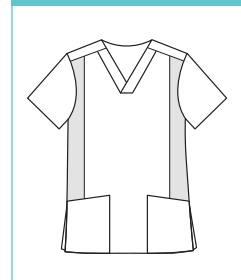
8001 pág. 116



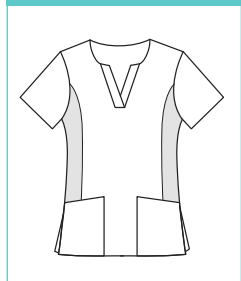
8011 pág. 116



8028 pág. 117



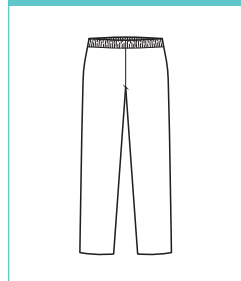
8029 pág. 117



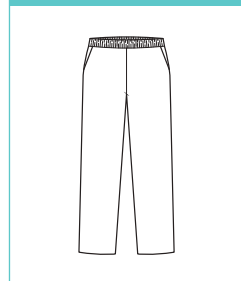
8188 pág. 120



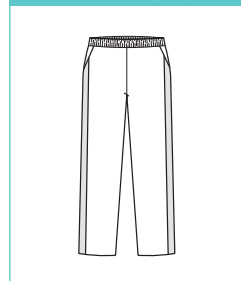
8201 pág. 122



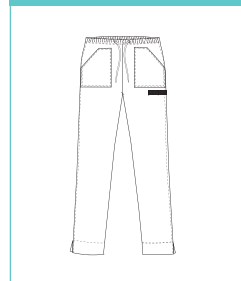
9929 pág. 124



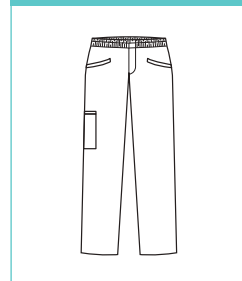
8179 pág. 126



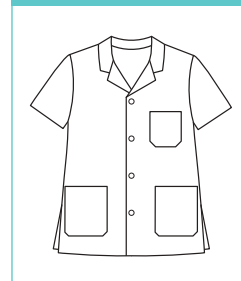
8268 pág. 126



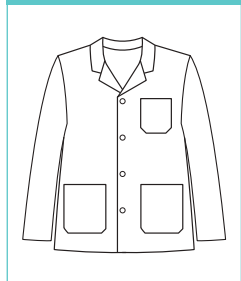
8220 pág. 127



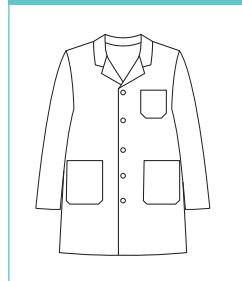
8832 pág. 128



8831 pág. 128



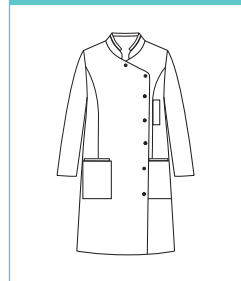
8806 pág. 129



8800 pág. 129



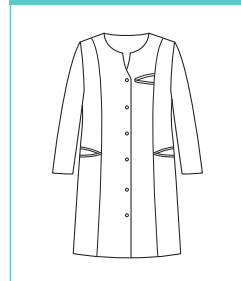
8885 pág. 130



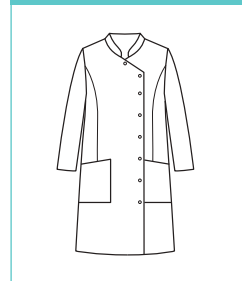
8290 pág. 130



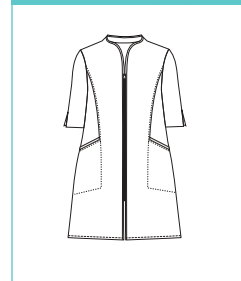
8217 pág. 131



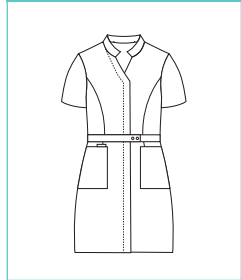
8218 pág. 131



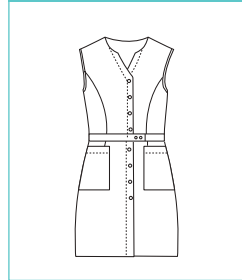
8092 pág. 132



8095 pág. 132



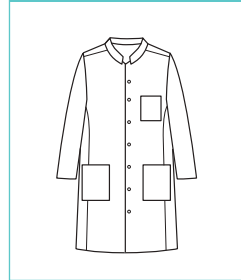
8093 pág. 133



8681 pág. 133



8813 pág. 134



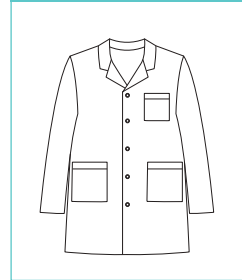
8816 pág. 134



8897 pág. 135



8898 pág. 135



8163 pág. 137

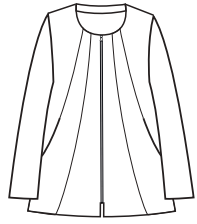


# ÍNDICE GRÁFICO

8825 pág. 137



8291 pág. 138



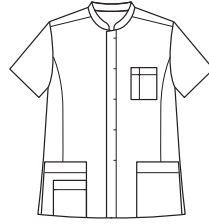
8151 pág. 139



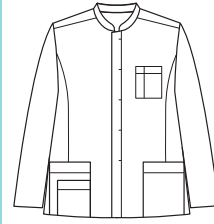
8152 pág. 139



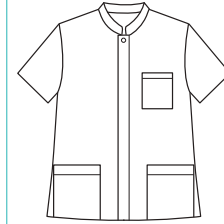
8251 pág. 140



8252 pág. 140



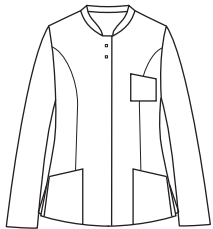
8815 pág. 142



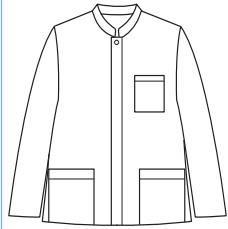
8826 pág. 142



8205 pág. 143



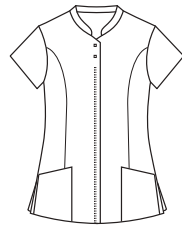
8213 pág. 143



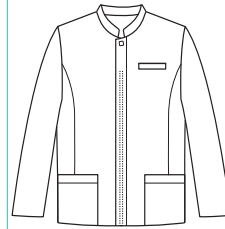
8515 pág. 144



8517 pág. 144



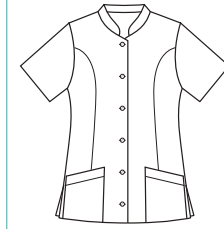
8514 pág. 145



8516 pág. 145



8295 pág. 146



8207 pág. 146



8296 pág. 147



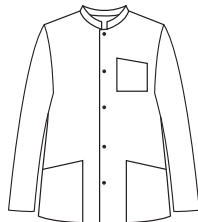
8208 pág. 147



8253 pág. 148



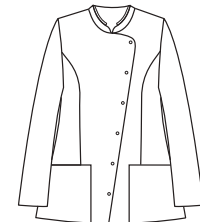
8254 pág. 148



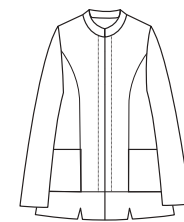
8175 pág. 149



8176 pág. 149



8190 pág. 150



8191 pág. 150



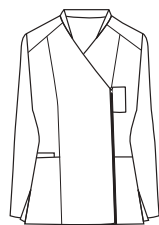
8212 pág. 151



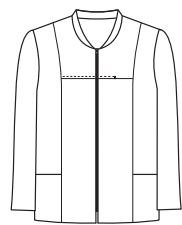
8206 pág. 151



8828 pág. 151



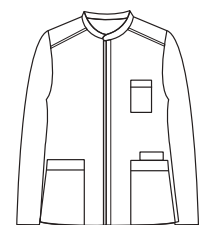
8819 pág. 151



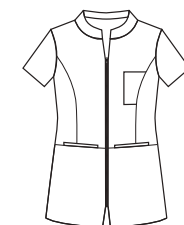
8827 pág. 152



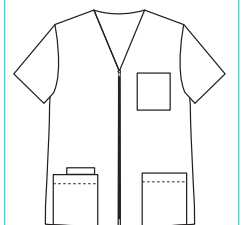
8883 pág. 152



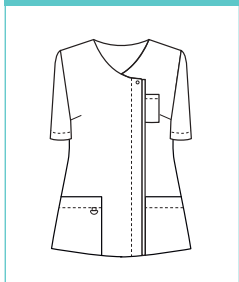
8804 pág. 153



8808 pág. 153



8821 pág. 155



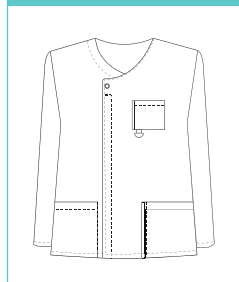
8822 pág. 155



8803 pág. 157



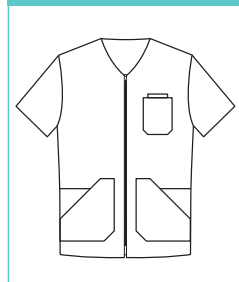
8802 pág. 157



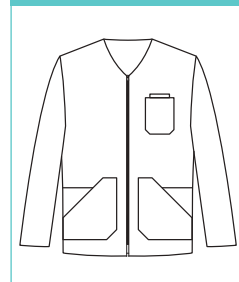
8209 pág. 158



8210 pág. 158



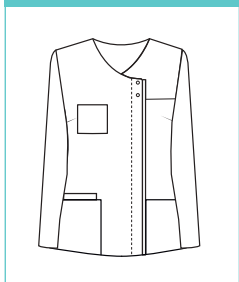
8010 pág. 160



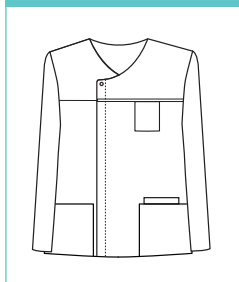
8009 pág. 161



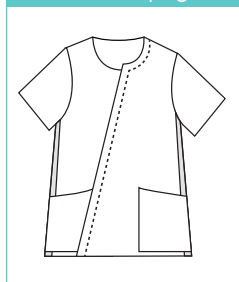
8817 pág. 162



8818 pág. 162



8187 pág. 164



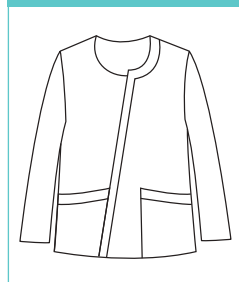
8186 pág. 164



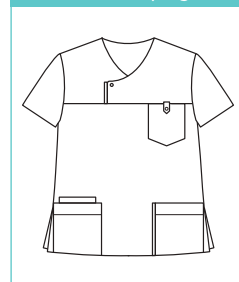
8177 pág. 165



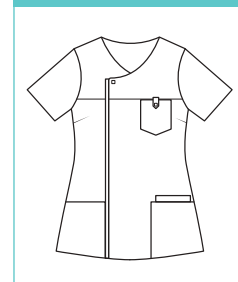
8052 pág. 165



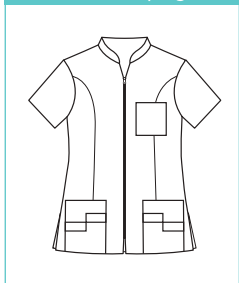
8022 pág. 166



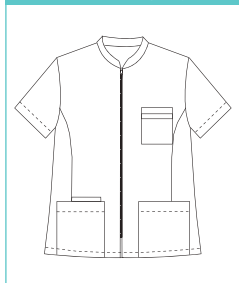
8023 pág. 166



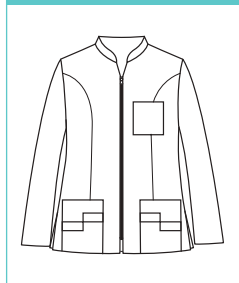
8293 pág. 168



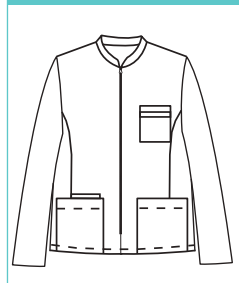
8262 pág. 169



8294 pág. 170



8073 pág. 171



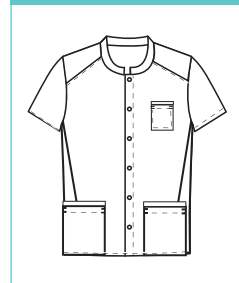
8289 pág. 172



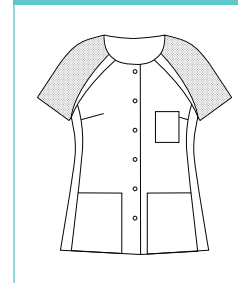
8043 pág. 174



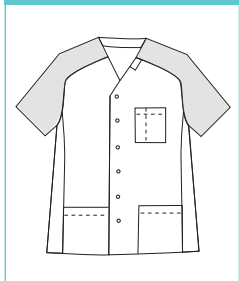
8072 pág. 175



8820 pág. 176



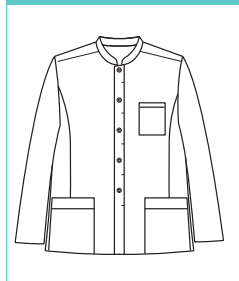
8088 pág. 177



8264 pág. 178



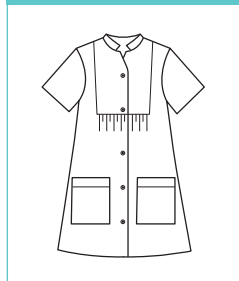
8824 pág. 178



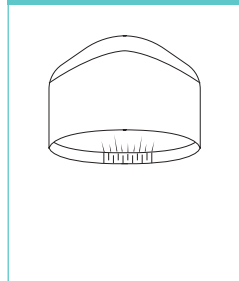
8200 pág. 180



8241 pág. 180



8409 pág. 182



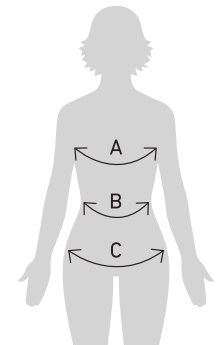


## Guía de tallaje mujer Women measurement guide

- A Perímetro pecho / Chest contour
- B Perímetro cintura / Waist contour
- C Perímetro cadera / Hip contour

Casacas, Pichis y Prendas Unisex / Tunics Jumper dress and unisex clothing.

	SP		P		M		G		SG		SSG		XG	
	36	38	40	42	44	46	48	50	52	54	56	58	60	62
<b>Pecho</b> Chest	80	84	88	92	96	100	104	108	112	116	120	124	128	132
<b>Cadera</b> Hip	88	92	96	100	104	108	112	116	120	124	128	132	136	140



Pantalones Mujer y Pantalones Unisex / Woman trousers and unisex trousers.

	SP		P		M		G		SG		SSG		XG	
	36	38	40	42	44	46	48	50	52	54	56	58	60	62
<b>Cintura</b> Waist	64	68	72	76	80	84	88	92	96	100	104	108	112	116
<b>Cadera</b> Hip	90	94	98	102	106	110	114	118	122	126	130	134	138	142

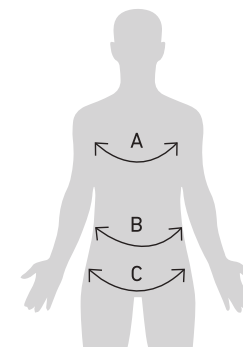
# GUÍA DE TALLAS

## Guía de tallaje hombre Men measurement guide

- A Perímetro pecho / Chest contour
- B Perímetro cintura / Waist contour
- C Perímetro cadera / Hip contour

### Casacas / Tunics.

	SP	P	M	G	SG	SSG	XG
	42-44	46-48	50-52	54-56	58-60	62-64	66-68
<b>Pecho</b> Chest	84-90	92-98	100-106	108-114	116-122	124-130	132-138
<b>Cadera</b> Hip	82-88	90-96	98-104	106-112	114-120	122-128	130-136



### Pantalones Hombre / Man trousers.

	SP		P		M		G		SG		SSG		XG	
	36	38	40	42	44	46	48	50	52	54	56	58	60	62
<b>Cintura</b> Waist	70	74	78	82	86	90	94	98	102	106	110	114	118	122
<b>Cadera</b> Hip	82	86	90	94	98	102	106	110	114	118	122	126	130	134

## Tecnología de nuestros tejidos y sus propiedades.

Dyneke apuesta por la innovación tanto en sus diseños como en los materiales que se incorporan en nuestras prendas, de esta forma obtenemos unos resultados garantizables en cuanto a comodidad y resistencia.

## Technology of our tissues and their properties.

Dyneke is committed to innovation both in its designs and in the materials that are incorporated in our garments, in this way we obtain a guaranteed results in terms of comfort and resistance.



**Rejilla transpirable y elástica/** Breathable and elastic mesh.



**Extraconfort, suave al tacto/** Extra comfort, soft touch



**lones de plata, antiolor, antibacteriana/** Silver ions, anti-odor, antibacterial.



**Hidrofugado, repele líquidos/** Water-repellent.



**Tejido elástico/** Elastic fabric.



**Cierre con cremallera/** Zipper closure.



**Cierre con botón/** Button closure.



**Cierre con corchete redondo/** Square clasp closure.



**Cierre con corchete cuadrado/** Square clasp closure.



**Cierre con lazo/** Bow closure.



**Tejido rico en algodón/** Cotton-rich fabric.



**Tejido denim, tejano/** Denim fabric.



**DNK**  
**DYNEKE**

DYNEKE



¡Descarga  
el catálogo completo  
en tu dispositivo móvil!



<sup>DNK</sup>  
**DYNEKE**

CONFECCIONES DYNEKE · Herois del Bruc, 9 · 08784 Piera · Tel: 93778 90 83 · WWW.DYNEKE.COM

