



HOSTELERÍA

CATÁLOGO GENERAL 2024

DNK
DYNEKE



Desde Dyneke trabajamos día a día para lograr la excelencia en nuestro producto final así como en todo el proceso de fabricación.

En este catálogo encontrarás todas las prendas que hemos diseñado con mimo y delicadeza para que en tu negocio vistas con elegancia, glamour y distinción.

La calidad, la innovación, el trabajo en equipo y el **diseño** son nuestros valores principales.

Utilizamos materias primas que ofrecen la mayor **calidad** apostando por la **innovación** y el uso de las nuevas tecnologías en todos los sectores de la empresa.

El **trabajo en equipo** es muy importante para llevar a cabo nuestros proyectos de manera coordinada y coherente. Para ello contamos con un equipo de profesionales diverso y exigente dentro de cada ámbito y departamento.

En cuanto al **diseño** de nuestros productos, nos basamos en las últimas tendencias de moda haciendo que nuestros usuarios puedan lucir prendas originales y exclusivas.

¡Descubre nuestra colección de prendas y complementos para vestir a los mejores profesionales!





HOSTELERÍA

www.dyneke.com

8550900



8550

Chaqueta de cocinero manga corta y doble botonadura. Men's chef jacket, short-sleeves with double-breasted.

701 Negro · Black
65% Pol. Poly. · 35% Algod./Cotton
195 gr/m²



900 Blanco · White
67% Pol. Poly. · 33% Algod./Cotton
195 gr/m²



Largo/length: 73 cm
Talla/Size: SP-XG/XS-XXXL



8550701



8547701

**8547**

Chaqueta cocinero m/larga
doble botonadura. Men's che
jacket, l/sleeves with double-
breasted.

701 Negro · Black
65% Pol. Poly. · 35% Algod./Cotton
195 gr/m²



900 Blanco · White
67% Pol. Poly. · 33% Algod./Cotton
195 gr/m²



Largo/length: 73 cm
Talla/Size: SP-XG/XS-XXXL



8547900



8551900



8551701

8551

Chaqueta de cocinera manga corta y doble botonadura.
Women's chef jacket, s/sleeves with double-breasted.

900 Blanco · White
67% Pol. Poly. · 33% Algod./Cotton
195 gr/m²



701 Negro · Black

65% Pol. Poly. ·
35% Algod./Cotton
195 gr/m²



Largo/length: 67 cm
Talla/Size: SP-XG/XS-XXXL



8548900

**8548**

Chaqueta cocinera m/larga y doble botonadura. Women chef's jacket. I/sleeves with double button breasted.

701 Negro · Black
65% Pol. Poly. · 35% Algod./Cotton
195 gr/m²



900 Blanco · White
67% Pol. Poly. · 33% Algod./Cotton
195 gr/m²



Largo/length: 67 cm
Talla/Size: SP-XG/XS-XXXL



8548701







8583579



8583

Chaqueta cocinero con rejilla espalda, corchetes ocultos en tapeta, m/larga. Men's chef l/sleeves jacket with mesh on the back, concealed snaps on the placket.

578 Negro · Black
579 Blanco · White

Microfibra hidrof. (100% Pol./Poly.)
86 gr/m²



Largo/length: 76 cm
Talla/Size: SP-XG/XS-XXXL



8583578



8593579

 MICROFIBRA



8593

Chaqueta cocinera con rejilla espalda, corchetes ocultos en tapeta, m/larga. Women's chef l/sleeves jacket with mesh on the back concealed snaps on the placket.

578 Negro · Black
579 Blanco · White

Microfibra hidrof. (100% Pol./Poly.)
86 gr/m²



Largo/length: 68 cm
Talla/Size: SP-XG/XS-XXXL



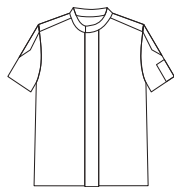
8593578



DNK



8453457

**8453**

Chaquetilla cbro. m/corta, rejilla espalda y corchetes. Men's chef s/sleeves jacket, mesh on the back and snap fasteners.

457 Gris · Grey

65% Pol. Poly. · 35% Algod./Cotton
195 gr/m²



Largo/length: 76 cm
Talla/Size: SP-XG/XS-XXXL



8592534

**8592**

Chaqueta cocinero m/larga, tejano gris con rejilla. Men's chef jacket, long-sleeves, grey denim with mesh.

534 Gris · Grey

80% Algod./Cotton · 20% Pol./Poly.
(hidrofugado) 146 gr/m²



Largo/length: 75 cm
Talla/Size: SP-XG/XS-XXXL



www.dyneke.com



8823571



8823584



8823570



8823

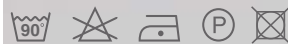
Chaqueta cruzada m/corta cbro. con corchetes. Men's chef crossover jacket, s/sleeves with snaps fasteners.

570 Blanco · White

571 Negro · Black

584 Gris · Gray

Microfibra (100% Pol./Poly.)
150 gr/m²



Largo/length: 76 cm
Talla/Size: SP-XG/XS-XXXL





8801700



8801

Chaqueta caballero m/larga, rejilla en costadillos. Men's chef jacket, long-sleeves, mesh on the sides.

701 Negro · Black
700 Blanco · White

65% Pol. Poly. · 35% Algod./Cotton
195 gr/m²



Largo/length: 76 cm
Talla/Size: SP-XG/XS-XXXL



**ELEGANCIA Y CONFORT
PARA LOS PROFESIONALES
MÁS EXIGENTES.**

8801701





8448701



8448

Chaqueta cocinera m/ larga, rejilla en costadillos. Women's chef l/sleeves jacket, mesh on the sides.

700 Blanco · White
701 Negro · Black
 65% Pol. Poly.
 35% Algod./Cotton
 195 gr/m²



775 Tejano · Denim
 55% Pol./Poly. · 42% Algod./Cotton · 3% Elastan
 180 gr/m²



844 Gris · Gray
 70% Algod./Cotton · 35% Pol. Poly.
 130 gr/m²



Largo/length: 67 cm
 Talla/Size: SP-XG/XS-XXXL



8448700



8448844



8448775



8519700



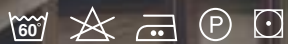
8519

Chaqueta de cocinera, manga 3/4. Women's chef jacket, 3/4 sleeves.

700 Blanco · White

701 Negro · Black

65% Pol. Poly. · 35% Algod./Cotton
195 gr/m²



844 Gris · Gray

70% Algod./Cotton · 30% Pol. Poly.
130 gr/m²



Largo/length: 68 cm

Talla/Size: SP-XG/XS-XXXL



200

DNK



8519701



8519844



8521701

8521700



8521

Chaqueta cocinera m/larga doble botonadura. Women's chef jacket. l/sleeves, double button breasted.

700 Blanco · White
67% Pol. Poly. · 33% Algod./Cotton
195 gr/m²



701 Negro · Black
70% Pol. Poly. · 30% Algod./Cotton
195 gr/m²



Largo/length: 68 cm
Talla/Size: SP-XG/XS-XXXL



8591112

MICROGRANITO

8590112



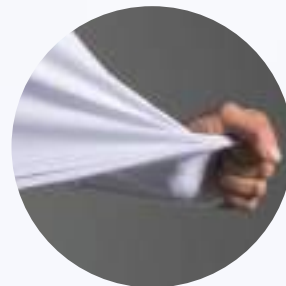
8591

Chaqueta de cocinera
"pecherin" de rejilla. Chef's
jacket with cool dry.

112 Blanco · White
100% Pol. Poly.
180 gr/m²



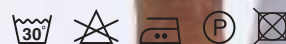
Largo/length: 65 cm
Talla/Size: SP-XG/XS-XXXL



8590

Chaqueta cocinero "híbrida" con
rejilla, cierre corchetes. Men's chef
jacket "hybrid" with mesh, snaps on
the placket.

112 Blanco · White
100% Pol. Poly.
180 gr/m²



Largo/length: 65 cm
Talla/Size: SP-XG/XS-XXXL





8557701



8557700



8557

Chaqueta hostelería "motera" mujer con rejilla en costadillo espalda. Women's jacket "biker style" with mesh on the sides of the back.

700 Blanco · White

701 Negro · Black

65% Pol. Poly. 35% Algod./Cotton
195 gr/m²



Largo/length: 66 cm

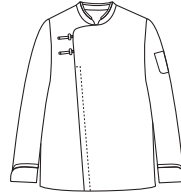
Talla/Size: SP-XG/XS-XXXL



8556701



8556700



8556

Chaqueta hostelería "motera" hombre con rejilla en costadillo espalda. Men's jacket "biker style" with mesh on the sides of the back.

700 Blanco · White

701 Negro · Black

65% Pol. Poly. · 35% Algod./Cotton

195 gr/m²



Largo/length: 77 cm

Talla/Size: SP-XG/XS-XXXL



www.dyneke.com



8442700

**8442**

Chaqueta hombre, detalle
hombros con rejilla en costadillos
espalda. Men's jacket, padded
shoulder detail with mesh on the
sides of the back.

700 Blanco · White

701 Negro · Black

65% Pol. Poly. · 35% Algod./Cotton
195 gr/m²



Largo/length: 73 cm

Talla/Size: SP-XG/XS-XXXL



8442701



8455112



8455

Chaquetilla hombre microgranito y rejilla. Manga 3/4. Men's hostelry jacket microgranite and mesh. 3/4 Sleeves.

112 Blanco · White
100% Pol. Poly.
180 gr/m²



Largo/length: 74 cm
Talla/Size: SP-XG/XS-XXXL



MICROGRANITO



8454

Chaquetilla mujer microgranito y rejilla. Manga 3/4. Women's hostelry jacket microgranite and mesh. 3/4 Sleeves.

112 Blanco · White
100% Pol. Poly.
180 gr/m²



Largo/length: 70 cm
Talla/Size: SP-XG/XS-XXXL



8454112

PORQUE LA ELEGANCIA
NO ESTÁ REÑIDA CON LA
COMODIDAD, VISTE DNK.





8540741



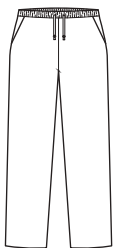
8540701



8540635



8540685



8540

Pantalón hostelería con goma elástica y cordón. Chef pants with drawstring elastic waist.

571 Negro · Black
Microfibra (100% Pol./Poly.)
150 gr/m²



701 Negro · Black
65% Pol. Poly. · 35% Algod./Cotton
195 gr/m²



685 Cuadro azul marino
635 Cuadro negro gris
70% Pol./Poly. · 30% Algod./Cotton
107 gr/m²



741 Pato gallo · Gallop
100% Pol./Poly
165 gr/m²



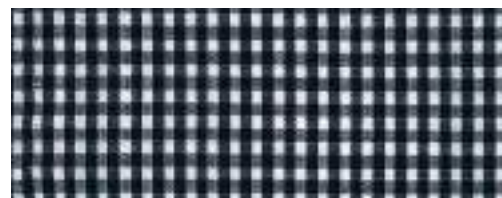
Largo/length: 107 cm
Talla/Size: SP-XG/XS-XXXL



741



635



685



8540571



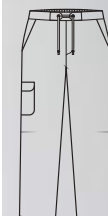
DENIM

9929775



8485701

8542701

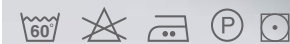


8542

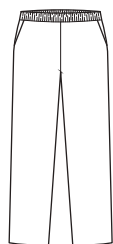
Pantalón caballero trinchas con cinta. Chef pants with drawstring elastic waist.

701 Negro · Black

65% Pol. Poly. · 35% Algod./Cotton
195 gr/m²



Largo/length: 107 cm
Talla/Size: SP-XG/XS-XXXL



9929

Pantalón unisex con cinturilla elástica y bolsillos. Unisex trousers whit elastic waist and pockets.

775 Tejano · Denim

55% Pol. Poly. · 42% Algod./Cotton
3% Elastano
180 gr/m²



Largo/length: 108 cm
Talla/Size: SP-XG/XS-XXXL



8485

Pantalón de hombre para hostelería. Chef pants.

701 Negro · Black

65% Pol. Poly. · 35% Algod./Cotton
195 gr/m²

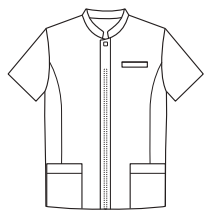


Largo/length: 113 cm
Talla/Size: SP-XG/XS-XXXL



8515701

8517701



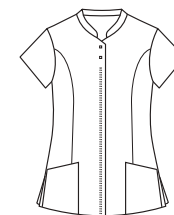
8515

Chaqueta hombre m/corta,
corchetes ocultos en tapeta.
Men's s/ sleeves jacket, hidden
snap fasteners.

701 Negro · Black
65% Pol. Poly. · 35% Algod./Cotton
195 gr/m²



Largo/length: 76 cm
Talla/Size: SP-XG/XS-XXXL



8517

Chaqueta mujer m/corta,
corchetes ocultos en tapeta.
Women's s/ sleeves jacket, hidden
snap fasteners.

701 Negro · Black
65% Pol. Poly. · 35% Algod./Cotton
195 gr/m²



Largo/length: 70 cm
Talla/Size: SP-XG/XS-XXXL



8516701

**8516**

Chaqueta mujer m/larga,
corchetes ocultos en tapeta.
Women's l/ sleeves jacket, hidden
snap fasteners.

701 Negro · Black
65% Pol. Poly. · 35% Algod./Cotton
195 gr/m²



Largo/length: 70 cm
Talla/Size: SP-XG/XS-XXXL



8514701

**8514**

Chaqueta hombre
m/larga, corchetes ocultos
en tapeta. Men's l/ sleeves
jacket, hidden snap fasteners.

701 Negro · Black
65% Pol. Poly. · 35% Algod./Cotton
195 gr/m²



Largo/length: 76 cm
Talla/Size: SP-XG/XS-XXXL



8207725



8207

Chaqueta hombre manga corta, cuello mao. Men's jacket, short sleeves, mao collar.

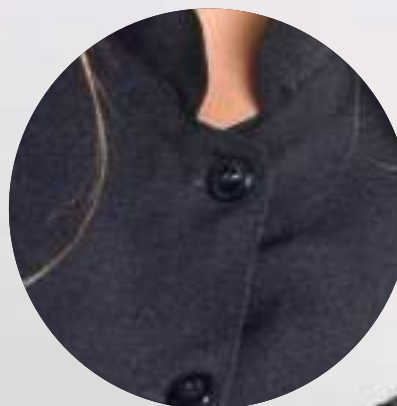
725 Negro · Black
100% Pol./Poly
165 gr/m²



Largo/length: 76 cm
Talla/Size: SP-XG/XS-XXXL



8295725



8295

Chaqueta mujer manga corta, cuello mao. Women's jacket, short sleeves, mao collar.

725 Negro · Black
100% Pol./Poly
165 gr/m²



Largo/length: 70 cm
Talla/Size: SP-XG/XS-XXXL





8296

Chaqueta mujer manga larga, cuello mao. Women's jacket, long sleeves, mao collar.

725 Negro · Black
100% Poliéster
165 gr/m²



Largo/length: 70 cm
Talla/Size: SP-XG/XS-XXXL



8208

Chaqueta hombre manga larga, cuello mao y botones. Men's jacket, long sleeves, mao collar and buttons.

725 Negro · Black

100% Pol./Poly.
165 gr/m²



Largo/length: 76 cm
Talla/Size: SP-XG/XS-XXXL





8254725

8254

Chaqueta unisex manga larga con corchetes. Unisex's long sleeves jacket with snap fasteners.

725 Negro · Black
100% Pol. Poly.
165 gr/m²



Largo/length: 73 cm
Talla/Size: SP-XG/XS-XXXL



8253725



8253

Chaqueta unisex manga corta con corchetes. Unisex's short sleeves jacket with snap fasteners.

725 Negro · Black
100% Pol. Poly.
165 gr/m²



Largo/length: 73 cm
Talla/Size: SP-XG/XS-XXXL



8254571



8253571

**8254**

Chaqueta unisex manga larga con corchetes. Unisex's long sleeves jacket with snap fasteners.

571 Negro · Black
Microfibra (100% Pol./Poly.)
150 gr/m²



Largo/length: 73 cm
Talla/Size: SP-XG/XS-XXXL

**8253**

Chaqueta unisex manga corta con corchetes. Unisex's short sleeves jacket with snap fasteners.

571 Negro · Black
Microfibra (100% Pol./Poly.)
195 gr/m²



Largo/length: 73 cm
Talla/Size: SP-XG/XS-XXXL



8190571

 MICROFIBRA



8190

Chaqueta imperial m/larga mujer, doble tapeta. Women's imperial jacket, l/sleeves with double-placket snaps.

571 Negro · Black
Microfibra (100% Pol./Poly.)
150 gr/m²



Largo/length: 74 cm
Talla/Size: SP-XG/XS-XXXL



8191571



8191

Chaqueta imperial m/larga hombre, doble tapeta. Men's imperial jacket, l/sleeves with double-placket snaps.

571 Negro · Black
Microfibra (100% Pol./Poly.)
150 gr/m²



Largo/length: 75 cm
Talla/Size: SP-XG/XS-XXXL



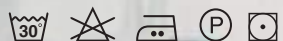


8455111

8455

Chaquetilla hombre microgranito y rejilla. Manga 3/4. Chef's jacket, long sleeves with folded cuffs and buttons.

111 Negro · Black
100% Pol./Poly.
180 gr/m²



Largo/length: 74 cm
Talla/Size: SP-XG/XS-XXXL

8454111



8454

Chaquetilla mujer microgranito y rejilla. Manga 3/4. Chef's jacket, long sleeves with folded cuffs and buttons.

111 Negro · Black
100% Pol./Poly.
180 gr/m²



Largo/length: 70 cm
Talla/Size: SP-XG/XS-XXXL

40°


www.dyneke.com


8577112



8577

Camiseta hombre microgranito elástica m/corta. Men's t-shirt elastic microgranite, short sleeves.

112 Blanco · White

111 Negro · Black

100% Pol./Poly.

180 gr/m²



Largo/length: 76 cm

Talla/Size: SP-XG/XS-XXXL

MICROGRANITO



8578

Camiseta mujer microgranito elástica m/corta. Women's t-shirt elastic microgranite, short sleeves.

112 Blanco · White

111 Negro · Black

100% Pol./Poly.

180 gr/m²



Largo/length: 68 cm

Talla/Size: SP-XG/XS-XXXL

8578112



 MICROGRANITO

8577111

8578111



8598537

MICROGRANITO

8597537



8598

Polo mujer microgranito manga corta contraste arena. Women's polo shirt with contrast, short sleeve.

537 Negro arena · Black sand
65% Pol. Poly. · 35% Algod./Cotton
195 gr/m²



Largo/length: 67 cm
Talla/Size: SP-XG/XS-XXXL



8597

Polo hombre microgranito manga corta contraste arena. Men's polo shirt with contrast, short sleeve.

537 Negro arena · Black sand
65% Pol. Poly. · 35% Algod./Cotton
195 gr/m²



Largo/length: 68 cm
Talla/Size: SP-XG/XS-XXXL



EL ESTILO LLEVADO
AL MÁXIMO NIVEL.



40

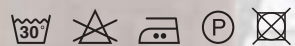




8452

Camisa chica cuello mao combinada, manga corta
Manga larga. Women's shirt with mao collar, short sleeve.

844 Gris · Gray
70% Algod./Cotton · 30% Pol./Poly.
130 gr/m²



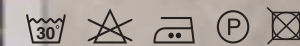
Largo/length: 68 cm
Talla/Size: SP-XG/XS-XXXL



8451

Camisa chico cuello mao combinada, manga 3/4. Men's shirt with mao collar, 3/4 sleeve.

844 Gris · Gray
70% Algod./Cotton · 30% Pol./Poly.
130 gr/m²



Largo/length: 76 cm
Talla/Size: SP-XG/XS-XXXL



8571841



8571

Camisa caballero cuello mao, manga larga.

Men's shirt with mao collar, long sleeve.

841 Negro · Black
70% Algod./Cotton · 30% Pol./Poly.
130 gr/m²



Largo/length: 76 cm
Talla/Size: SP-XG/XS-XXXL



8572841

8572

Camisa señora cuello mao, manga larga.

Women's shirt with mao collar, long sleeve.

841 Negro · Black
70% Algod./Cotton · 30% Pol./Poly.
130 gr/m²



Largo/length: 65 cm
Talla/Size: SP-XG/XS-XXXL



8571823

8572823

**8571**

Camisa caballero cuello mao, manga larga.

Men's shirt with mao collar, long sleeve.

823 Blanco · White
70% Algod./Cotton · 30% Pol./Poly.
130 gr/m²



Largo/length: 76 cm
Talla/Size: SP-XG/XS-XXXL

**8572**

Camisa señora cuello mao, manga larga.

Women's shirt with mao collar, long sleeve.

823 Blanco · White
70% Algod./Cotton · 30% Pol./Poly.
130 gr/m²



Largo/length: 65 cm
Talla/Size: SP-XG/XS-XXXL



8535823



8535

Camisa ibicenca mujer con cuello mao abierto. Women's ibicencan style shirt, mao collar.

823 Blanco · White

70% Algod./Cotton · 30% Pol./Poly.
130 gr/m²



Largo/length: 70 cm

Talla/Size: SP-XG/XS-XXXL



8534823



8534

Camisa ibicenca cbro. con cuello mao abierto. Men's ibicencan style shirt, mao collar.

823 Blanco · White

70% Algod./Cotton · 30% Pol./Poly.
130 gr/m²



Largo/length: 77 cm

Talla/Size: SP-XG/XS-XXXL



8535841



8535

Camisa ibicenca mujer con cuello mao abierto. Women's ibicencan style shirt, mao collar.

841 Negro · Black
70% Algod./Cotton · 30% Pol./Poly.
130 gr/m²



Largo/length: 70 cm
Talla/Size: SP-XG/XS-XXXL



Terraza

8534841



8534

Camisa ibicenca cbro. con cuello mao abierto. Men's ibicencan style shirt, mao collar.

841 Negro · Black
70% Algod./Cotton · 30% Pol./Poly.
130 gr/m²



Largo/length: 77 cm
Talla/Size: SP-XG/XS-XXXL



8172112



MICROGRANITO



8172

Camiseta unisex microgranito
botón madera. Unisex t shirt
microgranite with wooden button.

112 Blanco · White

111 Negro · Black

100% Pol./Poly

180 gr/m²



Largo/length: 76 cm

Talla/Size: SP-XG/XS-XXXL



8172111





8545537



8545

Pantalón chino caballero.
Men's chino pants.

537 Arena · Sand
60% Pol./Poly.
40% Alg./Cotton
206 gr/m²



Largo/length: 105 cm
Talla/Size: SP-XG/XS-XXXL



8546537



8546

Pantalón chino señora.
Women's chino pants.

537 Arena · Sand
60% Pol./Poly.
40% Alg./Cotton
206 gr/m²



Largo/length: 100 cm
Talla/Size: SP-XG/XS-XXXL





MODA, DISEÑO Y COMODIDAD,
PARA LOS NEGOCIOS MÁS
EXIGENTES.

8166469



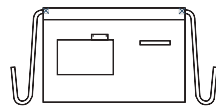
8166467



8166468



8166466



8166

Delantal corto extraresistente.
Extra-durable short apron.

- 464 Granate · Garnet
- 466 Azul · Blue
- 467 Marrón · Brown
- 468 Negro · Black
- 469 Verde · Green
- 459 Beig · Beige

65% Pol./Poly 35% Alg./Cotton
245 gr/m²



Largo/length: 43.50 cm
Ancho/width: 89 cm
Talla/Size: única/ unic

8166459

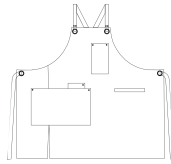


8166464





8164466



8164

Delantal peto extraresistente.
Extra-durable bib apron.

- 464 Granate · Garnet
- 466 Azul · Blue
- 467 Marrón · Brown
- 468 Negro · Black
- 469 Verde · Green
- 459 Beige · Beige

65% Pol./Poly 35% Alg./Cotton



Largo/length: 86 cm
Ancho/width: 75 cm
Talla/Size: única/unic



8164467



8164468



8164464



8164459

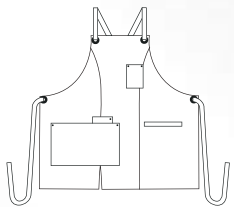


8164469

8165466

8165468

8165469



8165

Delantal peto chica extraresistente.
Extra-durable bib apron.

- 466 Azul · Blue
- 467 Marrón · Brown
- 468 Negro · Black
- 469 Verde · Green

65% Pol./Poly · 35% Alg./Cotton



Largo/length: 68 cm
Ancho/width: 75 cm
Talla/Size: única/ unic



8165467



8528376



8529376



8528375



8529375



EXTRA RESISTENTE AL CLORO



8528

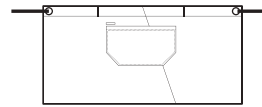
Delantal peto bicolor.
Bicolor bib apron.

376 Gris · Grey
375 Verde · Green

100% Pol./Poly.
207 gr/m²



Largo/length: 84 cm
Ancho/width: 76 cm
Talla/Size: única/ unic



8529

Delantal corto bicolor.
Bicolor short apron.

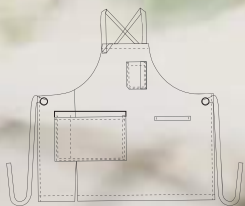
376 Gris · Grey
375 Verde · Green

100% Pol./Poly.
207 gr/m²



Largo/length: 42 cm
Ancho/width: 86 cm
Talla/Size: única/ unic





8170

Delantal peto cruce tejano.
Big denim apron whit cross.

775 Tejano · Denim
55% Pol./Poly. · 42% Algod./Cotton
3% Elastano
180 gr/m²



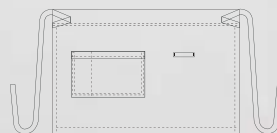
Largo/length: 84 cm
Ancho/width: 75 cm
Talla/Size: única/ unic



8170775



8171775



8171

Delantal corto tejano contraste cintas. Short denim apron with contrast ribbons.

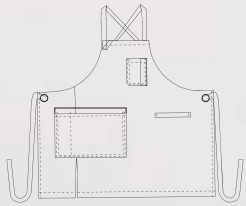
775 Tejano · Denim
55% Pol./Poly. · 42% Algod./Cotton
3% Elastano
180 gr/m²



Largo/length: 44 cm
Ancho/width: 88 cm
Talla/Size: única/ unic



8170309



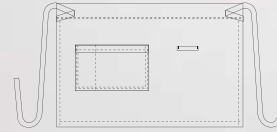
8170

Delantal peto cruce tejano.
Big denim apron whit cross.

309 Beige · Beige
100% Pol./Poly.
207 gr/m²



Largo/length: 84 cm
Ancho/width: 75 cm
Talla/Size: única/ unic



8171

Delantal corto tejano contraste cintas. Short denim apron with contrast ribbons.

309 Beige · Beige
100% Pol./ Poly.
207 gr/m²

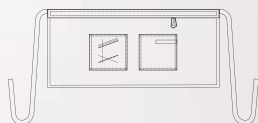


Largo/length: 44 cm
Ancho/width: 88 cm
Talla/Size: única/ unic



8171309

8965775



8965

Delantal corto tejero bordado.
Short denim apron embroidered.

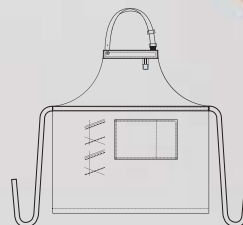
775 Tejano · Denim
55% Pol./ Poly 42% Alg/Cotton
3% Elastano
180 gr/m²



Largo/length: 43 cm
Ancho/width: 88 cm
Talla/Size: única/ unic



8964775



8964

Delantal peto tejero bordado.
Bib denim apron embroidered.

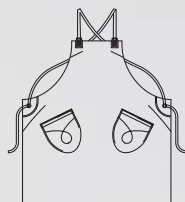
775 Tejano · Denim
55% Pol./ Poly 42% Alg/Cotton
3% Elastano
180 gr/m²



Largo/length: 84 cm
Ancho/width: 77 cm
Talla/Size: única/ unic



8421775

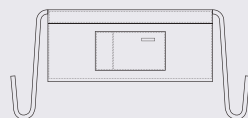
**8421**

Delantal peto tejano con hebillas.
Bib denim apron with buckles.

775 Tejano · Denim
55% Pol./Poly. 42% Alg./Cotton
3% Elastano
180 gr/m²



Largo/length: 78 cm
Ancho/width: 76 cm
Talla/Size: única/ unic

**8478**

Delantal corto bicolor tejano.
Short denim apron bicolor.

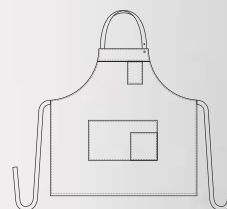
775 Tejano · Denim
55% Pol./Poly. 42% Alg./Cotton
3% Elastano
180 gr/m²



Largo/length: 39 cm
Ancho/width: 87 cm
Talla/Size: única/ unic



8478775

**8479**

Delantal bicolor tejano con peto.
Bib denim apron bicolor.

775 Tejano · Denim
55% Pol./Poly. 42% Alg./Cotton
3% Elastano
180 gr/m²



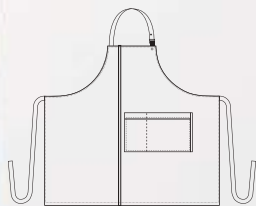
Largo/length: 77 cm
Ancho/width: 78 cm
Talla/Size: única/ unic



8479775



8968516



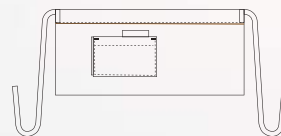
8968

Delantal peto tejano negro
contraste flúor. Bib black denim
apron with fluor contrast.

516 Negro · Black
65% Alg/Cotton 33% Pol./ Poly.
2% Elastano
220 gr/m²



Largo/length: 88 cm
Ancho/width: 75 cm
Talla/Size: única/ unic



8969

Delantal corto tejano negro
contraste flúor. Short black denim
apron with fluor contrast.

516 Negro · Black
65% Alg/Cotton 33% Pol./ Poly.
2% Elastano
220 gr/m²



Largo/length: 44 cm
Ancho/width: 88 cm
Talla/Size: única/ unic



8969516



8969775



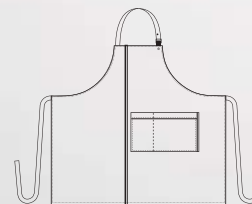
8969

Delantal corto tejano contraste flúor. Short denim apron with flúor contrast.

775 Tejano · Denim
55% Pol./ Poly 42% Alg/Cotton
3% Elastano
180 gr/m²



Largo/length: 44 cm
Ancho/width: 88 cm
Talla/Size: única/ unic



8968

Delantal peto tejano contraste flúor. Bib denim apron with flúor contrast.

775 Tejano · Denim
55% Pol./ Poly 42% Alg/Cotton
3% Elastano
180 gr/m²



Largo/length: 88 cm
Ancho/width: 75 cm
Talla/Size: única/ unic



8968775



8966374



8966

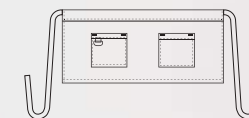
Delantal peto loneta tirante regulable. Bib apron canvas adjustable strap.

369 Beige · Beige
371 Gris · Grey
374 Rojo · Red
100% Pol./ Poly.
207 gr/m²



Largo/length: 86 cm
Ancho/width: 77 cm
Talla/Size: única/ unic

8967374



8967

Delantal corto loneta muy resistente. Short apron canvas very resistant.

369 Beige · Beige
371 Gris · Grey
374 Rojo · Red
100% Pol./ Poly.
207 gr/m²

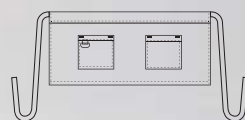


Largo/length: 43 cm
Ancho/width: 88 cm
Talla/Size: única/ unic

8966369



8967369

**8967**

Delantal corto loneta muy resistente. Short apron canvas very resistant.

369 Beige · Beige
371 Gris · Grey
374 Rojo · Red
100% Pol./ Poly.
207 gr/m²



Largo/length: 43 cm
Ancho/width: 88 cm
Talla/Size: única/ unic

**8966**

Delantal peto loneta tirante regulable. Bib apron canvas adjustable strap.

369 Beige · Beige
371 Gris · Grey
374 Rojo · Red
100% Pol./ Poly.
207 gr/m²



Largo/length: 86 cm
Ancho/width: 77 cm
Talla/Size: única/ unic



8966371



8966

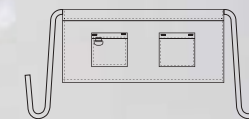
Delantal peto loneta tirante regulable. Bib apron canvas adjustable strap.

369 Beige · Beige
371 Gris · Grey
374 Rojo · Red
100% Pol./ Poly.
207 gr/m²



Largo/length: 86 cm
Ancho/width: 77 cm
Talla/Size: única/ unic

8967371



8967

Delantal corto loneta muy resistente. Short apron canvas very resistant.

369 Beige · Beige
371 Gris · Grey
374 Rojo · Red
100% Pol./ Poly.
207 gr/m²



Largo/length: 43 cm
Ancho/width: 88 cm
Talla/Size: única/ unic



8249382

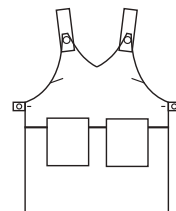
8076382



8249383



8249381



8076

Estola en loneta con botones.
Canvas stole with buttons.

- 381 Marrón · Brown
 - 382 Gris · Grey
 - 383 Granate · Garnet
 - 384 Azul · Blue
 - 385 Verde · Green
 - 386 Rosa · Pink
- 55% Pol./Poly · 45% Alg./Cotton
185 gr/m²



Largo/length: 82 cm
Talla/Size: única/ unic



8249

Delantal peto loneta bicolor.
Big apron bicolor canvas.

- 381 Marrón · Brown
 - 382 Gris · Grey
 - 383 Granate · Garnet
 - 384 Azul · Blue
 - 385 Verde · Green
 - 386 Rosa · Pink
- 55% Pol./Poly · 45% Alg./Cotton
185 gr/m²



Largo/length: 87 cm
Talla/Size: única/ unic

8076384



8249384



8249385



8249386





8167384



8167383



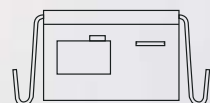
8167381



8167390



8167385



8167

Delantal corto loneta bicolor. Short bicolor canvas apron.

- 381** Marrón · Brown
 - 382** Gris · Grey
 - 383** Granate · Garnet
 - 384** Azul · Blue
 - 385** Verde · Green
 - 390** Rosa · Pink
- 55% Pol. Poly. · 45% Algod./Cotton
185 gr/m²



Largo/length: 43 cm
Ancho/width: 88 cm
Talla/Size: única/ unic





8461725

8461

Delantal corto bolsillo central divisorio. Apron with central pocket.

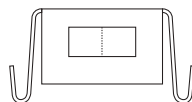
725 Negro · Black
100% Pol./Poly.
165 gr/m²



701 Negro · Black
65% Pol. Poly. 35% Alg./Cotton
195 gr/m²



Largo/length: 43 cm
Ancho/width: 88 cm
Talla/Size: única/ unic



8426795



8426900



8461701

8426

Delantal peto envolvente bolsillo central divisorio.

Bib apron with central pocket.

725 Negro · Black
100% Pol./Poly.
165 gr./m²



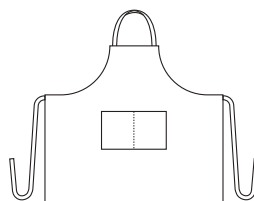
795 Granate · Garnet
70% Pol./Poly. 30% Alg./Cotton
160 gr./m²



701 Negro · Black
900 Blanco · White
67% Pol. Poly. 33% Alg./Cotton
195 gr./m²



Largo/length: 88 cm
Ancho/width: 100 cm
Talla/Size: única/ unic



8426725



8426701



8490701



8490844



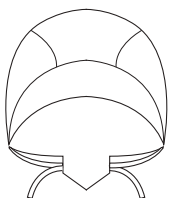
8466701



8466742



8466844



8490

Gorro pirata con cintas atrás.
Adjustable bandana hat.

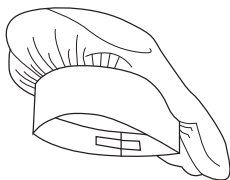
844 Gris · Grey
70% Algod./Cotton ·
30% Pol./Poly
130 gr/m²



701 Negro · Black
65% Pol. Poly. ·
35% Algod./Cotton
195 gr/m²



Talla/Size: única/ unic



8466

Gorro cocinero con velcro
posterior. Chef's hat with velcro
fastening.

742 Blanco · White
100% Algodón/Cotton
205 gr/m²



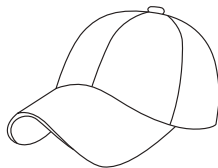
844 Gris · Grey
70% Alg./Cotton
30% Pol./Poly.
130 gr/m²



701 Negro · Black
65% Pol. Poly. · 35% Algod./Cotton
195 gr/m²



Talla/Size: única/ unic



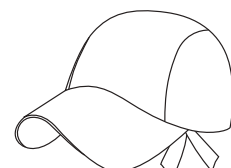
8402

Gorra "strike" con visera.
"Strike" cap with visor.

376 Gris · Grey
100% Pol./Poly.
207 gr/m²



Talla/Size: única/ unic



8403

Gorra pirata con cinta
ajustable detrás. Cap with
adjustable strap at the back.

381 Marrón · Brown
55% Pol. Poly. ·
45% Algod./Cotton
185 gr/m²



Talla/Size: única/ unic



8402376



8403381



8408701



8408700



8404775



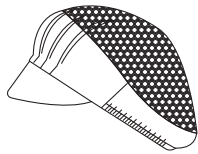
8404701



8486102



8408844



8408

Gorro visera con rejilla en la parte superior. Peaked cap with mesh.

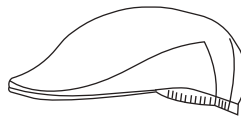
700 Blanco · White
701 Negro · Black
65% Pol./ Poly. · 35% Algod./Cotton
195 gr/m²



844 Gris · Grey
70% Alg./Cotton · 30% Pol./Poly
130 gr/m²



Talla/Size: única/ unic



8404

Boina inglesa con goma elástica. Beret english.

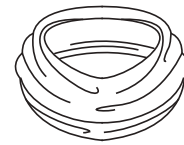
775 Tejano · Denim
55% Pol./Poly. 42% Alg./Cotton
3% Elastano
180 gr/m²



701 Negro · Black
65% Pol. Poly. · 35% Algod./Cotton
195 gr/m²



Talla/Size: única/ unic



8486

Bandana elástica para cabeza. Elastic headband.

102 Blanco · White
100% Pol. Poly.
208 gr/m²



Talla/Size: única/ unic

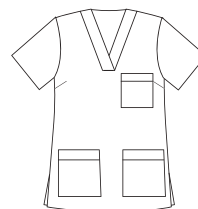
8235611



8235680



8235610



8235

Blusón servicio con cuello pico
manga corta. V-neck service
tunic s/ sleeve.

- 680 Gris · Grey
- 613 Azul · Blue
- 611 Celeste · Light blue
- 610 Rosa · Pink

70% Pol. Poly. · 30% Algod./Cotton
107 gr/m²



Largo/length: 70 cm
Talla/Size: SP-XG/XS-XXXL

8235613



8135613



8135

Chaqueta de servicio manga corta. Service jacket s/ sleeve.

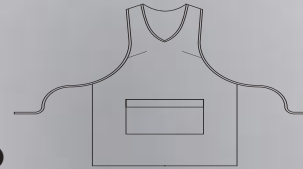
613 Azul · Black
70% Pol./Poly. · 30% Algod./Cotton
107 gr/m²



Largo/length: 73 cm
Talla/Size: SP-XG/XS-XXXL



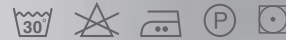
8026611



8026

Estola servicios con cintas ajustables. Service stole adjustable with cloth straps.

724 Marino · Navy
100% Pol./Poly.
165 gr/m²



611 Celeste · Light Blue
70% Pol./Poly. · 30% Algod./Cotton
107 gr/m²



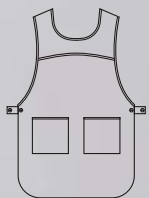
Largo/length: 81 cm
Talla/Size: única/unic



8026724



8468569



8468

Estola servicio rayas con botones.
Striped service stole with buttons.

- 584 Gris · Gray
- 569 Beige · Beige
- 583 Azul marino · Navy blue

Microfibra (100% Pol.)
150 gr/m²



Largo/length: 80 cm
Talla/Size: Única · Unic



8468584



8468583



8038569



8038

Chaqueta servicio combinada manga corta. Service combined jacket s/ sleeve.

- 573 Pistacho · Pistacio
- 569 Beige · Beige
- 584 Gris · Grey
- 583 Azul · Blue

Microfibra (100% Pol.)
150 gr/m²



795 Granate · Garnet
70% Pol. Poly. · 30% Algod./Cotton
160 gr/m²



Largo/length: 72 cm
Talla/Size: SP-XG/XS-XXXL



8038583



8038584



8038795

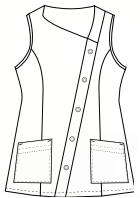


8038573



8041700

8041569



8041

Casaca sin mangas con corchetes en diagonal. Sleeveless jacket with diagonal snap fasteners.

700 Blanco · White
65% Pol. Poly. · 35% Algod./Cotton
195 gr/m²



569 Beige · Beige
Microfibra (100% Pol.)
150 gr/m²

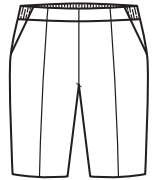


Largo/length: 63 cm
Talla/Size: SP-XG/XS-XXXL





8061700



8061

Bermudas con bolsillos y cintura de gomilla. Bermuda shorts with pockets and elasticated waist.

700 Blanco · White
65% Pol. Poly. · 35% Algod./Cotton
195 gr/m²



Largo/length: 52 cm
Talla/Size: SP-XG/XS-XXXL



8201

Pantalón unisex con cinturilla elástica. Unisex pants with elastic waistband.

700 Blanco · White
65% Algod./Cotton · 35% Pol./Poly.
195 gr/m²



Largo/length: 105 cm
Talla/Size: 36-62



8201700



8062700



8062

Pantalón pirata con cintura elástica en la parte posterior. Cropped pants with elastic waist at the back.

700 Blanco · White
65% Pol./ Poly. · 35% Algod./ Cotton
195 gr/m²



Largo/length: 78 cm
Talla/Size: SP-XG/XS-XXXL

ÍNDICE GRÁFICO

8550 pág. 188



8547 pág. 189



8551 pág. 190



8548 pág. 191



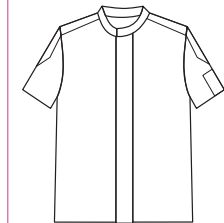
8583 pág. 194



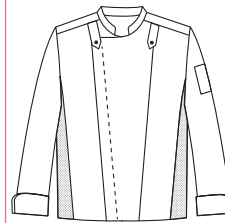
8593 pág. 194



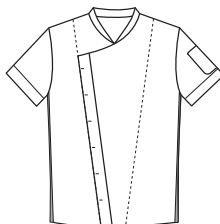
8453 pág. 195



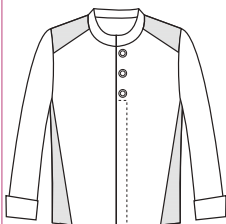
8592 pág. 195



8823 pág. 196



8801 pág. 197



8448 pág. 199



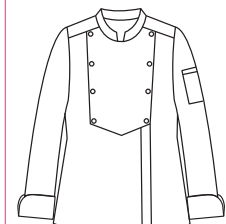
8519 pág. 200



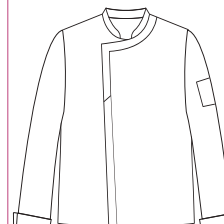
8521 pág. 201



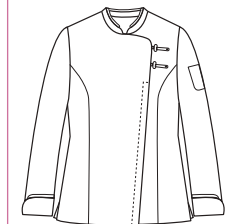
8591 pág. 202



8590 pág. 202



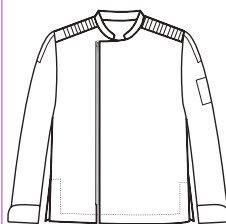
8557 pág. 204



8556 pág. 205



8442 pág. 207



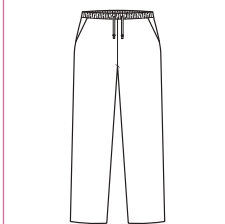
8455 pág. 208



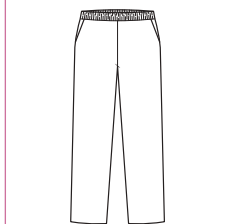
8454 pág. 208



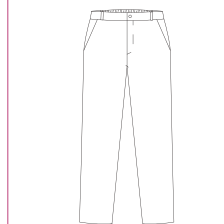
8540 pág. 210



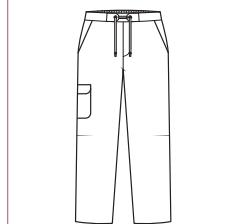
9929 pág. 211



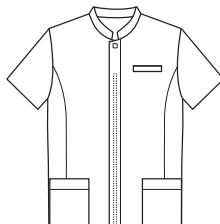
8485 pág. 211



8542 pág. 211



8515 pág. 212



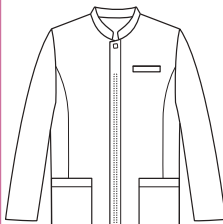
8517 pág. 212



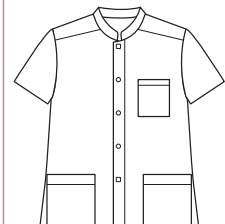
8516 pág. 213



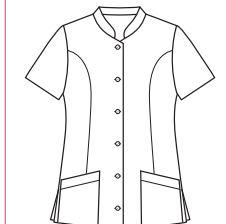
8514 pág. 213



8207 pág. 214



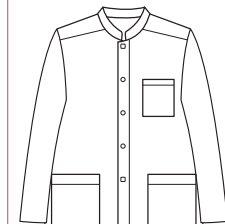
8295 pág. 214



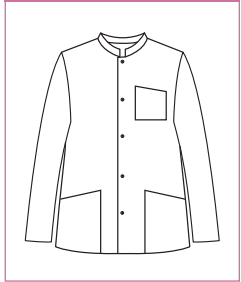
8296 pág. 215



8208 pág. 215



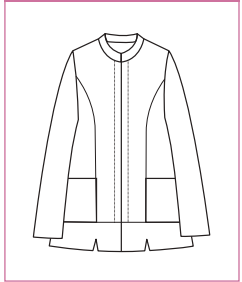
8254 pág. 216



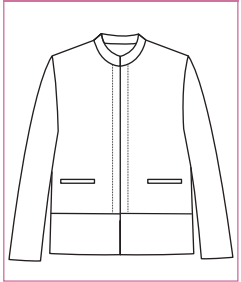
8253 pág. 217



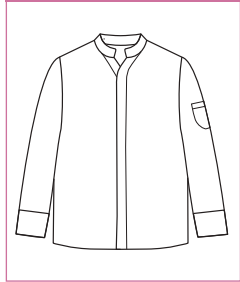
8190 pág. 218



8191 pág. 218



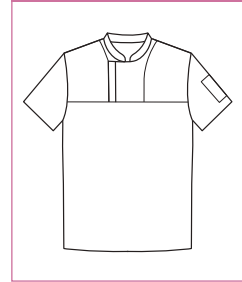
8455 pág. 219



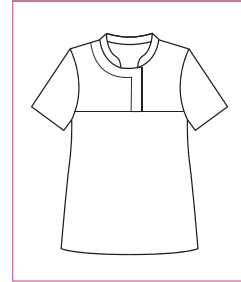
8454 pág. 219



8577 pág. 220



8578 pág. 220



8598 pág. 222



8597 pág. 222



8452 pág. 225



8451 pág. 225



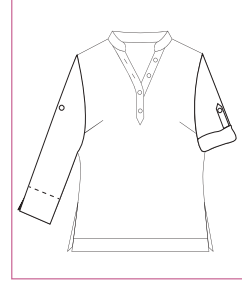
8571 pág. 226



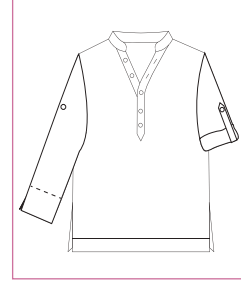
8572 pág. 226



8535 pág. 228



8534 pág. 228



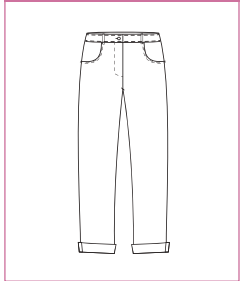
8172 pág. 230



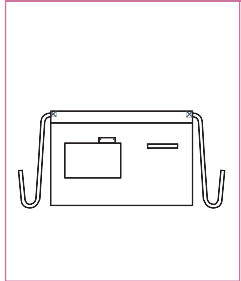
8545 pág. 231



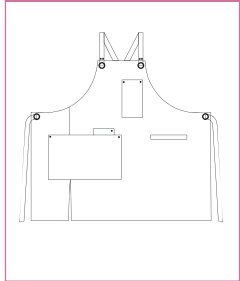
8546 pág. 231



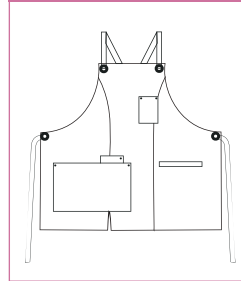
8166 pág. 233



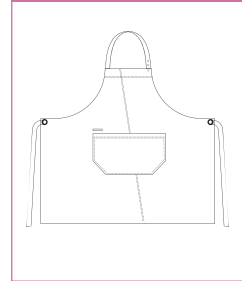
8164 pág. 234



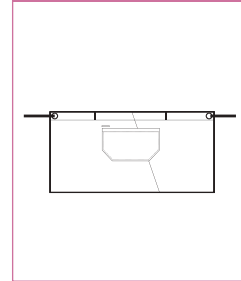
8165 pág. 235



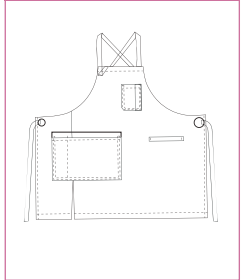
8528 pág. 237



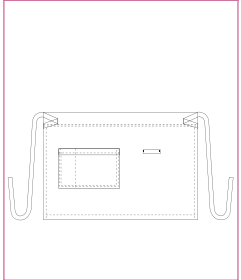
8529 pág. 237



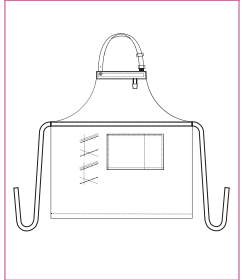
8170 pág. 238



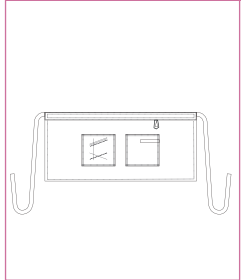
8171 pág. 238



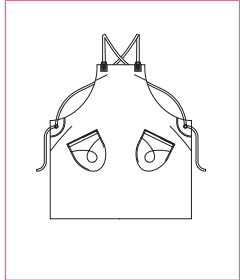
8964 pág. 240



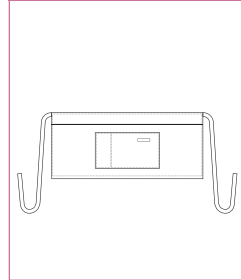
8965 pág. 240



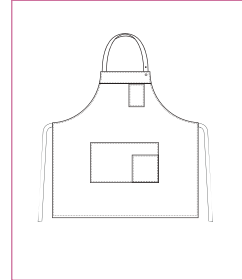
8421 pág. 241



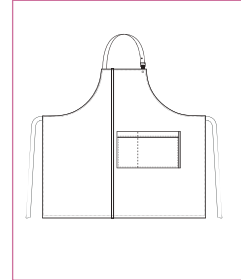
8478 pág. 241



8479 pág. 241

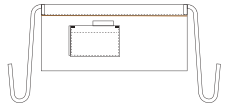


8968 pág. 242

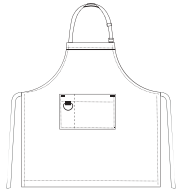


ÍNDICE GRÁFICO

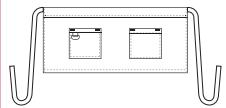
8969 pág. 242



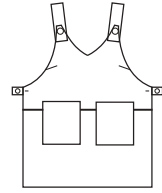
8966 pág. 244



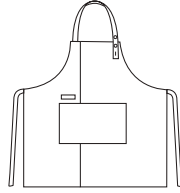
8967 pág. 244



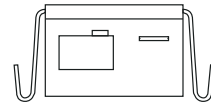
8076 pág. 248



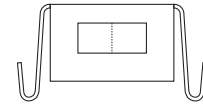
8249 pág. 248



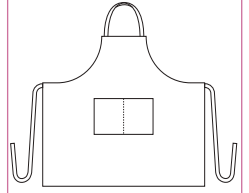
8167 pág. 250



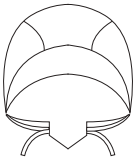
8461 pág. 253



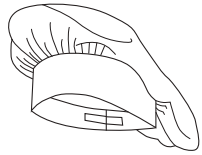
8426 pág. 253



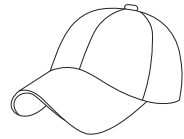
8490 pág. 254



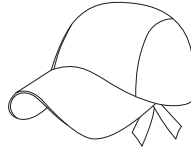
8466 pág. 254



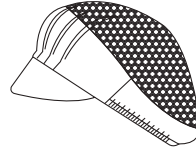
8402 pág. 254



8403 pág. 254



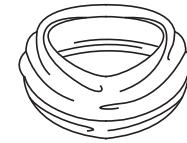
8408 pág. 255



8404 pág. 255



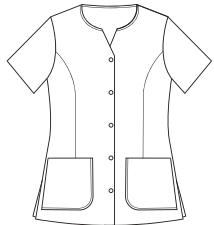
8486 pág. 255



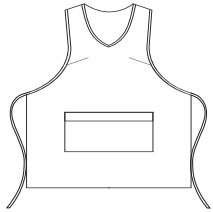
8235 pág. 256



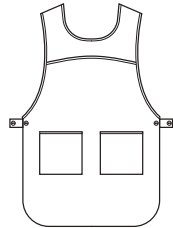
8135 pág. 257



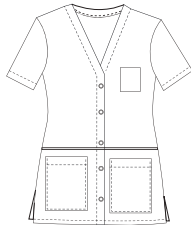
8026 pág. 257



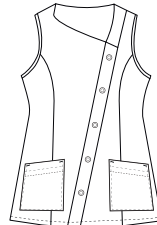
8468 pág. 258



8038 pág. 259



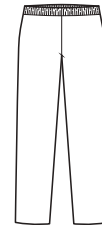
8041 pág. 260



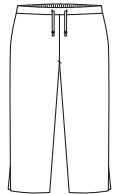
8061 pág. 261



8201 pág. 261



8062 pág. 261

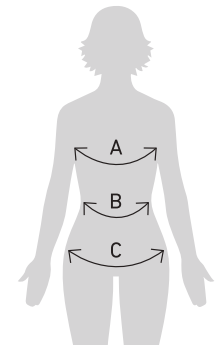


Guía de tallaje mujer Women measurement guide

- A Perímetro pecho / Chest contour
- B Perímetro cintura / Waist contour
- C Perímetro cadera / Hip contour

Casacas, Pichis y Prendas Unisex / Tunics Jumper dress and unisex clothing.

	SP		P		M		G		SG		SSG		XG	
	36	38	40	42	44	46	48	50	52	54	56	58	60	62
Pecho Chest	80	84	88	92	96	100	104	108	112	116	120	124	128	132
Cadera Hip	88	92	96	100	104	108	112	116	120	124	128	132	136	140



Pantalones Mujer y Pantalones Unisex / Woman trousers and unisex trousers.

	SP		P		M		G		SG		SSG		XG	
	36	38	40	42	44	46	48	50	52	54	56	58	60	62
Cintura Waist	64	68	72	76	80	84	88	92	96	100	104	108	112	116
Cadera Hip	90	94	98	102	106	110	114	118	122	126	130	134	138	142

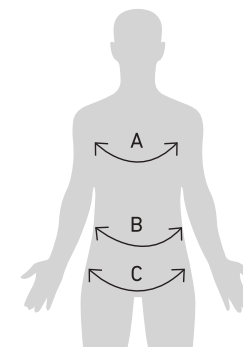
GUÍA DE TALLAS

Guía de tallaje hombre Men measurement guide

- A Perímetro pecho / Chest contour
- B Perímetro cintura / Waist contour
- C Perímetro cadera / Hip contour

Casacas / Tunics.

	SP	P	M	G	SG	SSG	XG
	42-44	46-48	50-52	54-56	58-60	62-64	66-68
Pecho Chest	84-90	92-98	100-106	108-114	116-122	124-130	132-138
Cadera Hip	82-88	90-96	98-104	106-112	114-120	122-128	130-136



Pantalones Hombre / Man trousers.

	SP		P		M		G		SG		SSG		XG	
	36	38	40	42	44	46	48	50	52	54	56	58	60	62
Cintura Waist	70	74	78	82	86	90	94	98	102	106	110	114	118	122
Cadera Hip	82	86	90	94	98	102	106	110	114	118	122	126	130	134

Tecnología de nuestros tejidos y sus propiedades.

Dyneke apuesta por la innovación tanto en sus diseños como en los materiales que se incorporan en nuestras prendas, de esta forma obtenemos unos resultados garantizables en cuanto a comodidad y resistencia.

Technology of our tissues and their properties.

Dyneke is committed to innovation both in its designs and in the materials that are incorporated in our garments, in this way we obtain a guaranteed results in terms of comfort and resistance.



Rejilla transpirable y elástica/ Breathable and elastic mesh.



Extraconfort, suave al tacto/ Extra comfort, soft touch



lones de plata, antiolor, antibacteriana/ Silver ions, anti-odor, antibacterial.



Hidrofugado, repele líquidos/ Water-repellent.



Tejido elástico/ Elastic fabric.



Cierre con cremallera/ Zipper closure.



Cierre con botón/ Button closure.



Cierre con corchete redondo/ Square clasp closure.



Cierre con corchete cuadrado/ Square clasp closure.



Cierre con lazo/ Bow closure.



Tejido rico en algodón/ Cotton-rich fabric.



Tejido denim, tejano/ Denim fabric.

DNK
DYNEKE

DYNEKE



¡Descarga
el catálogo completo
en tu dispositivo móvil!



^{DNK}
DYNEKE

CONFECCIONES DYNEKE · Herois del Bruc, 9 · 08784 Piera · Tel: 93778 90 83 · WWW.DYNEKE.COM

